

GP7000 parts and service manual

It is the OWNER'S RESPONSIBILITY to communicate information on the SAFE USE and OPERATION of this machine to the operators !



MBW INC.

P.O BOX 440 • 250 HARTFORD ROAD
SLINGER, WI 53086-0440
PHONE: (262) 644-5234 • FAX (262) 644-5169

MBW CORPORATE INTERNET ADDRESS
E-MAIL: mbw@mbw.com

WEB SITE: www.mbw.com

L1315 / 01.05 D
©MBW Inc 2005
Printed in U.S.A.

IN ENGLAND:
MBW (UK) LIMITED
Units 2 & 3
Cochrane Street
Bolton BL3 6BN
Phone: 01204 387784 • FAX: 01204 387797

TABLE OF CONTENTS

SAFETY PRECAUTIONS	1
SAFETY DECALS & LOCATIONS	2
WARRANTY	3
MBW WAREHOUSE LOCATIONS	4
SPECIFICATIONS	5
SERIAL NUMBER LOCATION	6
PARTS ORDERING PROCEDURE	6
OPERATION INSTRUCTIONS	7
Introduction	
Before Operation	
Operating	
PERIODIC MAINTENANCE	9
Engine Maintenance	
Ground Pounder Maintenance	
REPLACEMENT AND TOLERANCE CHART	10
TORQUE CHART	10
MAIN ASSEMBLY (Figure 1)	11
EXCITER ASSEMBLY (Figure 2)	12
EXCITER OIL LEVEL CHECK (Figure 3)	12
HONDA ENGINE ASSEMBLY (Figure 4)	13
YANMAR ENGINE ASSEMBLY (Figure 5)	14
Throttle Assembly Details	
KOHLER ENGINE ASSEMBLY (Figure 6)	15
JOB CART DETAILS (Figure 7)	16

SAFETY PRECAUTIONS

BEFORE YOU ATTEMPT TO OPERATE THIS EQUIPMENT, READ AND STUDY THE FOLLOWING SAFETY INFORMATION. IN ADDITION, MAKE SURE THAT EVERY INDIVIDUAL WHO OPERATES OR WORKS WITH THIS EQUIPMENT IS FAMILIAR WITH THESE SAFETY PRECAUTIONS.

WARNING – LETHAL EXHAUST GAS!

An internal combustion engine discharges carbon monoxide, a poisonous, odorless and invisible gas when operating. Death or serious illness may be caused if inhaled. Operate only where deadly exhaust gases can be safely dissipated, **NEVER IN A CONFINED AREA!**

WARNING – DANGEROUS FUELS!

Use extreme caution when storing, handling and using fuels – they are highly volatile and explosive in vapor state. Do not add fuel while engine is running. Stop engine and, if possible, allow cooling period to prevent spilled fuel from igniting on contact with hot engine parts. **DO NOT SMOKE!**

SAFETY GUARDS

It is the responsibility of the owner to ensure that **ALL GUARDS AND SHIELDS** remain in place.

IGNITION SYSTEMS

Breakerless, magneto and battery ignition systems **CAN CAUSE SEVERE ELECTRICAL SHOCKS**. Avoid contacting these units or their wiring.

SAFE DRESS

DO NOT WEAR loose clothing, neckties, rings, wristwatches, bracelets, etc., when around machinery.

NOISE PROTECTION

Wear O.S.H.A. specified hearing protection devices.

FOOT PROTECTION

Wear O.S.H.A. specified steel tip safety shoes.

HEAD PROTECTION

Wear O.S.H.A. specified safety helmets.

EYE PROTECTION

Wear O.S.H.A. specified eye shields, safety glasses, and sweat bands.

OPERATOR

Keep children and bystanders off and away from the equipment.

REFERENCES

For details on safety rules and regulations in the United States, contact your local Occupational Safety and Health Administration (O.S.H.A.) office.

Equipment operated in other countries must be operated and serviced in accordance and compliance with any and all safety requirements of that country.

The publication of these safety precautions is done for your information. M-B-W Inc. does not by the publication of these precautions, imply or in any way represent that these are the sum of all dangers present near M-B-W Equipment. If you are operating M-B-W Inc. equipment, it is your responsibility to insure that such operation is in full accordance with all applicable safety requirements and codes. All requirements of the United States Federal Occupational Safety and Health Administration Act must be met when operated in areas that are under the jurisdiction of that United States Department.

SAFETY NOTICE & DECALS



IMPORTANT NOTICE

The “**SAFETY ALERT SYMBOL**” is used to call attention to items or operations that may be dangerous to machine operators or others working with this equipment. The symbol can be found throughout this manual and on the unit itself. Please read these messages carefully.

READ SAFETY DECALS CAREFULLY

Carefully read and follow all safety decals. Keep them in good condition. If decals become damaged, replace as required. If repainting, **REPLACE ALL** decals. Decal Kits are available from authorized MBW Distributors.



CAUTION

Read the Operating Instructions before operating this piece of equipment.

Keep unauthorized and untrained people away from this equipment.

ROTATING & MOVING PARTS! Make sure all guards and safety devices are in place.

DO NOT RUN this machine in an enclosed area. The engine produces carbon monoxide, a **POISONOUS GAS**.

Wear approved hearing protection, foot protection, eye protection and head protection.

SHUT OFF the engine before servicing, cleaning or adding fuel.

Failure to comply could result in serious bodily injury.

13483

#13483, BELTGUARD



#01069, THROTTLE LEVER



WARNING

When lifting attach proper safety chains to this hook.

Approximate weight
GP7000: 655 lbs. (300 kg)

13479

#13479, ON DECK, IN FRONT OF HOOK

AIR CLEANER INSTRUCTIONS

CLEAN ELEMENT DAILY. MORE OFTEN UNDER DUSTY CONDITIONS. TAP ELEMENT LIGHTLY ON A FLAT SURFACE – IF DUST DOES NOT DROP OFF EASILY OR IF ELEMENT IS BENT OR CRUSHED.....

REPLACE IT!

WARNING: DO NOT OPERATE ENGINE WITHOUT AIR CLEANER ELEMENT – INTERNAL DAMAGE WILL RESULT!

06079

#06079, ON ENGINE

PLATES OPERATING INSTRUCTIONS

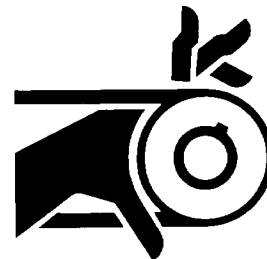
1. Check engine oil.
2. Open fuel valve.
3. Choke engine. A warm engine may not need to be choked.
4. Open throttle part way.
5. Pull starter rope.
6. After starting: open choke, return throttle to idle position.
7. During operation, when excessive kick-back is noticed, maximum compaction has been reached.
8. To stop: Return throttle to idle position, press “Stop” button, close fuel valve.

13482

#13482, BELTGUARD / DECK



WARNING



**ROTATING PARTS
Keep hands away!**

13484

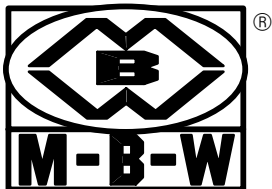
#13484, BELTGUARD

WARRANTY

WARRANTY

THIS IS YOUR WARRANTY – PLEASE READ AND SAVE

1. **MBW Inc.**, Slinger Wisconsin, warrants each new machine against defects in material and workmanship under normal use and service for a period of six (6) months. This warranty commences the first day the machine is sold, assigned to a rental fleet, or otherwise put to first use.
2. The obligation under this warranty is limited to the replacement or repair of parts and/or machine at **MBW Inc.** factory branches or at authorized **MBW Inc.** Distributors.
3. Machines altered or modified without **MBW Inc.** written consent voids this warranty. Misuse, negligence, accidents or the operation of machines in any way other than recommended by **MBW Inc.** will void this warranty. This warranty shall not apply to machines repaired by other than **MBW Inc.** factory branches or authorized **MBW Inc.** Distributors.
4. This warranty includes labor on all **MBW Inc.** products. Labor must be performed at an authorized **MBW Inc.** Distributor.
5. The cost of transportation and other expenses connected therewith are not covered by this warranty.
6. Written authorization for the return of merchandise under warranty must be obtained from **MBW Inc.**, Slinger, Wisconsin. In England: MBW (UK) LIMITED, Units 2 & 3, Cochrane Street, Bolton BL3 6BN.
7. **MBW Inc.** reserves the right to inspect and render final decision on each warranty case.
8. **MBW Inc.** reserves the right to improve or make product changes without incurring any obligation to update, refit, or install the same on machines previously sold.
9. **MBW Inc.** is not responsible for any liability or damage or injury directly or indirectly from design, material or operation of its products.
10. Warranty card must be returned to **MBW Inc.**, P.O. Box 440, Slinger, Wisconsin 53086–0440, within 10 days after purchase, assignment to a rental fleet, or first use. In England: MBW (UK) LIMITED, Units 2 & 3, Cochrane Street, Bolton BL3 6BN. Failure to return warranty card as specified renders the warranty null and void.
11. Requests for warranty must be submitted in writing within 30 days after machine failure to **MBW Inc.**, P.O. Box 440, Slinger, Wisconsin 53086–0440. In England: MBW (UK) LIMITED, Units 2 & 3, Cochrane Street, Bolton BL3 6BN.
12. THE FOREGOING WARRANTY IS EXPRESSLY IN LIEU OF ALL OTHER WARRANTIES, EXPRESSED OR IMPLIED, INCLUDING THE WARRANTIES OF MERCHANTABILITY AND FITNESS FOR USE, AND OF ALL OTHER OBLIGATION OR LIABILITIES ON OUR PART, AND WE NEITHER ASSUME NOR AUTHORIZE ANY OTHER PERSON TO ASSUME FOR US ANY OTHER LIABILITY OR WARRANTY IN CONNECTION WITH THE SALE OR SERVICE OF ANY OF OUR PRODUCTS. LIKEWISE, THIS WARRANTY SHALL NOT APPLY WITH RESPECT TO ENGINES, MOTORS AND OTHER COMPONENT PARTS PRODUCED BY OTHER MANUFACTURERS AND USED ON MBW PRODUCTS, BUT SUCH ITEMS SHALL HAVE SUCH WARRANTIES AS MAY BE PROVIDED BY THE MANUFACTURER THEREOF.



MBW INC.

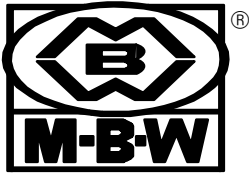
250 HARTFORD ROAD • P.O. BOX 440
SLINGER, WI 53086–0440
PHONE: (262) 644–5234 • FAX (262) 644–5169

MBW CORPORATE INTERNET ADDRESS
E–MAIL: mbw@mbw.com

WEB SITE: www.mbw.com

IN ENGLAND:
MBW (UK) LIMITED
Units 2 & 3
Cochrane Street
Bolton BL3 6BN
Phone: 01204 387784 • FAX: 01204 387797

MBW WAREHOUSE LOCATIONS



MBW is at your service

MBW Inc. has established a network of reputable Distributors with trained mechanics and full facilities for maintenance and rebuilding, and to carry an adequate parts stock in all areas of the country. Their sales engineers are available for professional consultation. If you cannot locate an MBW Inc. Distributor in your area, contact one of our Sales Branches or MBW Inc. The locations and phone numbers of the Sales Branches are listed below.

Remember – you own the best. If repairs are needed use only MBW Inc. parts purchased from Authorized MBW Inc. Distributors.

Sales Branches:

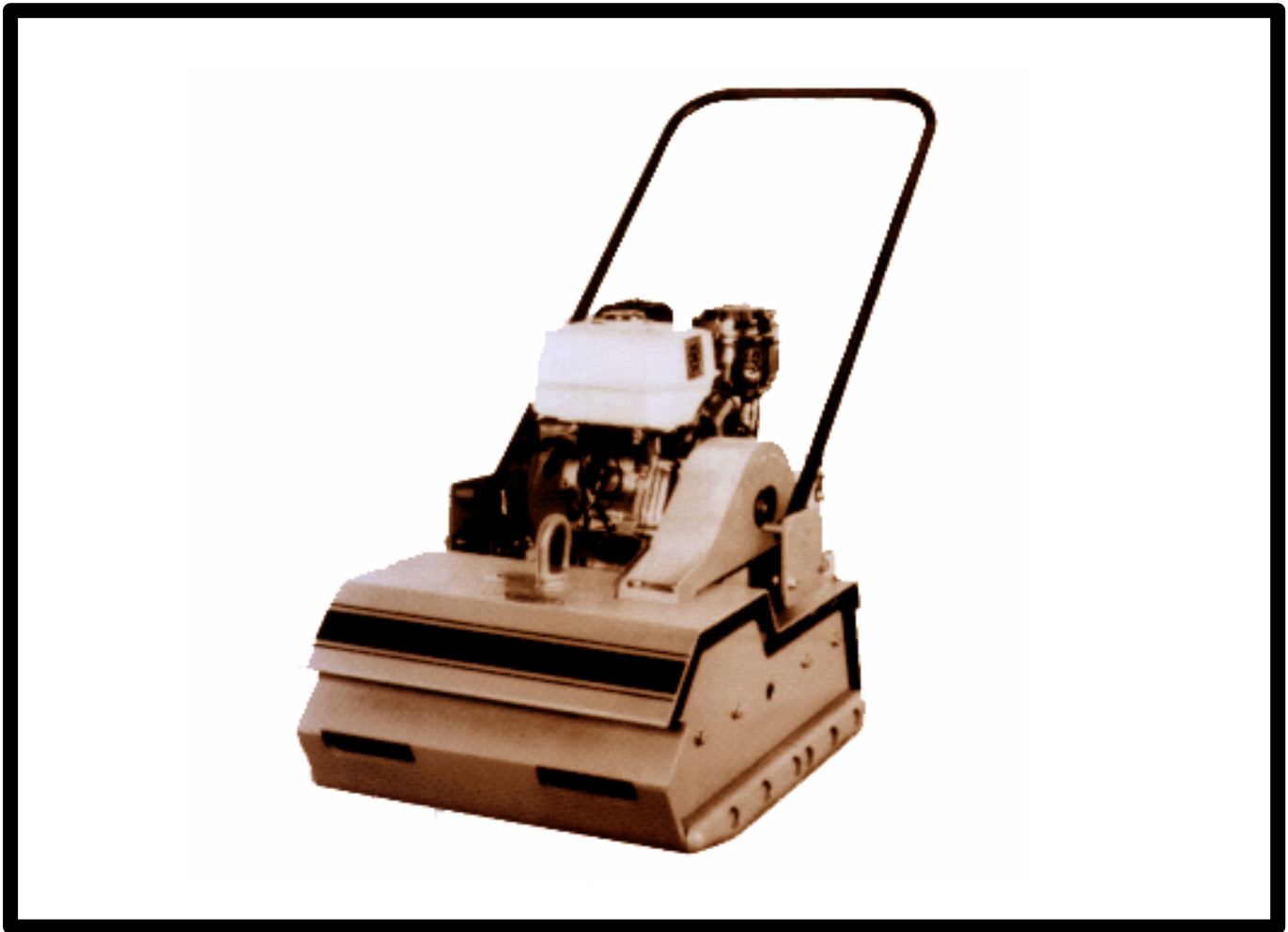
1. MBW Inc.
250 Hartford Rd.
P.O. Box 440
Slinger, WI 53086-0440
Phone: (262) 644-5234
FAX: (262) 644-5169

2. MBW (UK) LIMITED
Units 2 & 3
Cochrane St.
Bolton BL3 6BN
Phone: 01204 387784
FAX: 01204 387797

E-MAIL ON THE WORLD WIDE WEB mbw@mbw.com
WEB SITE ON THE INTERNET www.mbw.com



SPECIFICATIONS



GENERAL SPECIFICATIONS

	GP7000
CENTRIFUGAL FORCE*	7900lbs (3585 kg)
EXCITER VPM	2800
TRAVEL SPEED	100 ft/min (30 m/min)
COMPATION DEPTH	30 in (76 cm)
WIDTH AND LENGTH	26 x 30 in (66 x 76 cm)
OPERATING WEIGHT (HONDA)	653 lbs (296 kg)

ENGINE SPECIFICATIONS

	Honda GX340	Yanmar L100AE-D	Kohler K301T
MBW Part No.	07767	11929	00802
DISPLACEMENT	20.6 cu in. (337 cc)	24.78 cu in. (406 cc)	39.07 cu. in. (467 cc)
BORE & STROKE	3.23 x 2.5 in (72 x 64 mm)	3.39 x 2.76 in. (86 x 70 mm)	3.38 x 3.25 in (86 x 83 mm)
POWER RATING	11 hp (8.2 kw)	10 hp (7.4 kw)	12 hp (9 kw)
SPARK PLUG	Champion RN9YC or eq.	—	Champion RH-10 or equ.
DRY WEIGHT	68 lbs (31 kg)	106 lbs (48 kg)	123 lbs (56 kg)
AIR CLEANER	Dry element type	Wet element	Dry element type
STARTER	Retractable rewind	Retractable rewind	Retractable rewind
FUEL	Unleaded gasoline	#2 Diesel	Unleaded or Regular gasoline
FUEL TANK CAPACITY	1.7 gal (6.5 ltr)	1.45 gal (5.5 ltr)	1.5 gal (5.7 ltr)

*Output specifications in compliance with LEMB standards (Light Equipment Manufacturers Bureau of CIMA).

SERIAL NUMBER LOCATION

PLATE SERIAL NUMBER

1. Located on the top of the engine deck, behind the engine.

(Write Serial Number in box.)

2. The serial number is also stamped on top of the exciter housing.

PARTS ORDERING PROCEDURE

The **Warranty** is stated in this book on **page 3**. **Failure to return Warranty Registration Card renders the Warranty null and void.**

An Operating Instructions and Parts Catalog for the engine is also furnished. Engine Parts may be ordered from any authorized dealer. Refer to the Engine Operating Instructions and Parts Catalog for exploded view and parts identifications.

PARTS ORDERING

MBW Inc. parts are available worldwide and must be ordered through your local **MBW Inc. Distributor**. If you cannot locate an **MBW Inc. Distributor** in your area, refer to **page 4** of this Manual, locate the **MBW Inc.** Sales Branch nearest you and call for assistance.

ALWAYS INCLUDE:

1. Model and Serial Number of Machine when ordering **MBW Parts**.
2. Engine Model and Serial Number when ordering Engine Components.
3. Item Part Number, Description and Quantity.
4. Company Name, Address, Zip Code, and Purchase Order Number.
5. Preferred method of shipping.

MBW Inc. ships parts the same day as orders are received.

REMEMBER – you own the best. If repairs are needed use only MBW Inc. parts purchased from Authorized MBW Inc. Distributors.

OPERATING INSTRUCTIONS

INTRODUCTION

MBW Inc. Compaction Equipment is intended for use in very severe applications. They are powered by four stroke engines and are available in different sizes and a selection of engines.

This parts manual contains only standard or standard option parts. Variations of these parts as well as other special parts are not included. Contact your local MBW Inc. Distributor for assistance in identifying parts not included in this manual.

BEFORE OPERATION

After receiving your new MBW Inc. Ground Pounder® Compactor, inspect it for any visible damage done during shipment. Make sure the engine throttle works properly (see engine owner's manual). Contact your nearest MBW Inc. Distributor if there are any problems.



- **REMEMBER!** It is the owner's responsibility for communicating information on the safe use and proper operation of this unit to the operators.
- Make sure hands, feet, and clothing are at a safe distance from any moveable parts prior to starting.
- Before operating, review related SAFETY PRECAUTIONS listed on page 1 of this manual.
- Familiarize yourself with the operation of the equipment BEFORE starting the engine.
- Know how to STOP the equipment.
- **OIL LEVEL**— Check the oil level in the engine. For more information see “**Lubrication**” under the respective engine's “Owners Manual” or the PERIODIC MAINTENANCE section of this manual.
- **AIR CLEANER**— Check to ensure element is in good condition and properly installed.
- **FUEL SUPPLY**— The engines on MBW Inc. Compaction equipment require an automotive grade of clean, fresh, unleaded or regular gasoline.
- **FUEL FILTER**— If clogged or damaged, replace.

OPERATING

STARTING ENGINE

For detailed instructions refer to Engine Manual.

1. When starting engine, THROTTLE MUST BE IN AN IDLE POSITION. Open fuel valve. Choke engine if necessary, (when starting a warm engine it may not be necessary to choke it).
2. Pull starter rope. After engine starts, the choke lever can be moved back to the open position. Let the engine warm up in the idle position for one or two minutes.

RUNNING

1. After the engine warms up, fully open throttle. Compactor will begin vibrating and moving in a forward direction. The number of passes needed to reach the compaction level desired will depend on soil type and moisture. Maximum compaction of soil has been reached when excessive kickback is noticed in the compactor.
2. When using the compactor on asphalt use the water sprinkling system to keep the plate bottom from adhering to the hot asphalt surface.

STOPPING

1. To stop compactor from traveling forward return engine throttle to idle position.
2. Whenever possible, it is recommended to let the engine idle before stopping.
3. Turn switch on engine to "STOP" position. **For detailed instructions refer to Engine Manual.**
4. Turn off fuel valve.



STOP THE ENGINE BEFORE:

- **ADDING FUEL.**
- **LEAVING EQUIPMENT UNATTENDED, IF ONLY FOR A MINUTE.**
- **MAKING ANY REPAIRS OR ADJUSTMENTS TO UNIT.**

PERIODIC MAINTENANCE

ENGINE MAINTENANCE

AIR CLEANER

1. Your Compactor uses either a dry type air cleaner element or a "Dual" Oil—Foam and Paper Element. Clean the dry element or "Oil—Foam" element every 25 hours under normal conditions and every few hours under extremely dusty conditions.
 - a. Clean the dry element by tapping it lightly on a flat surface. Keep tapping until no dust comes off. The element should be replaced if the dust does not drop off easily or if the element becomes bent or crushed.

Note: Do not wash elements in any liquid or blow dirt off with air. Do not tap element on a sharp corner, it may damage the seal.
 - b. Clean the "Oil Foam" type element by washing it in kerosene or liquid detergent and water to remove the dirt. Wrap the foam in a cloth and squeeze dry. Saturate the foam in engine oil and squeeze it to remove excess oil. Assemble the parts and reinstall air cleaner to engine.

SPARK PLUG

A dirty, oily or carboned spark plug makes starting difficult and causes inefficient operation. Remove and clean spark plug as necessary (see engine manual). Set spark plug gap as described in engine manual.

LUBRICATION

Clean dirt from around oil fill cap and check oil level. Oil level should be between the "FULL" and "ADD" marks on the dipstick or to overflow point in fill hole on engine without dipstick.

Change oil after first two (2) hours of operation, and after every twenty—five (25) hours thereafter or at the end of each season. To change oil, tilt machine back and place a pan to catch oil underneath engine deck. Remove drain plug from engine and let oil drain into pan.



CAUTION!

If engine has been running, oil will be HOT! Where protective gloves when working with engine oil.

Replace engine drain plug and wipe oil off engine deck. Refill engine with oil in accordance to recommendations found in engine manual.

ENGINE RPM

1. The engine should be set at an operating speed of 3400 rpm. Check engine owner's manual for procedure on setting operating speed.
2. The idle speed of the engine must not exceed 1800 rpm. If the idle speed is greater the clutch may not disengage. Check engine owner's manual for procedure on setting idle speed.

GROUND POUNDER® MAINTENANCE

GENERAL MAINTENANCE

1. On a new Ground Pounder®, the exciter is pre-oiled at the factory, and needs no immediate attention.
 - a. Replace exciter oil once every season or every 500 hours.
 - b. The oil capacity of the exciter is 24 oz. (720ml)
 - c. Use only **MBW Ground Pounder® Exciter Oil** available in 6 packs (#01058).
2. Exciter Oil Change Procedure.



CAUTION!

**Oil in exciter is HOT after machine has been running!
Where protective gloves when working with oil.**

- a. Let engine cool before changing exciter oil.
 - b. Remove belt guard and belt.
 - c. Remove the 1/2" hex head cap screws from sided of plate housing.
 - d. Lift entire housing deck with engine from plate housing.
 - e. Remove the 3/8" drain screw (Figure 2, item 20) from the exciter housing cover.
 - f. Tilt plate housing upside down so oil drains from exciter housing. (Examine oil for metal chips as a precaution to future troubles.)
 - g. Replace drain screw
 - h. Tip plate housing upright and remove the 3/8" plug pipe on top of the exciter. Fill using 24 oz. (720ml) of **MBW Ground Pounder® Exciter Oil** (Oil can be purchased from your local MBW Distributor, part #01058). Replace the pipe plug!
 - i. Install housing deck, belt and belt guard.
3. Keep Plate Clean
 - a. Remove excess soil which enters rear of plate.
 4. Belt Adjustment
 - a. When belt stretch develops, loosen (do not remove) 4 engine mounting screws, pull engine back. Retighten engine bolts.

DISASSEMBLY PROCEDURE

1. Engine Removal.

There are two methods of engine removal.

 - a. To work on engine only, remove the belt guard, belt and 4 engine mounting screws.
 - b. The second method is to remove the entire engine deck (See b, c and d of exciter oil change)
2. For Engine repair, see your Authorized Engine Dealer.
3. Exciter Disassembly (Use Figure 2, Page 12)
 - a. Remove engine deck per steps b, c and d under Exciter Oil Change.
 - b. Remove 4 exciter hold-down bolts and clean exciter before proceeding with disassembly.
 - c. Remove V-pulley. If pulley is froze, go to the next step.
 - d. Remove rear cover (item 3) by unscrewing the 6 flange screws.
 - e. Block the exciter housing on large O.D. side, then press exciter shaft through housing.
 - f. Remove front cover.

Note: Always replace oil seal (item 2) after any teardown.

- g. To remove the roller bearing in the rear cover, remove snap ring (Item 5), then remove the two inner hex head cap screws. Use two 1/4" dia pins 2" long placed in the 5/16" threaded holes. Use square stock over the pin to bridge and press out the bearing.
- h. When reassembling use new gaskets, items 23 & 24 or "Form-A-Gasket" type compound.

REPLACEMENT AND TOLERANCE CHART

<u>Part</u>	<u>TOLERANCE OR REPLACEMENT CYCLE</u>
Air Cleaner Element	Replace after 75 hours if Engine is operating under good clean air conditions. Service and replace more frequently if under extreme dusty or dirty conditions.
Bearings	Replace anytime a Bearing is rough, binding or discolored.
Clutch	Replace the Shoes and Spring if they show signs of heat damage or the Clutch does not disengage below 2000 rpm.
Engine Breaker Points	See the engine manufacturer's Operator's Manual.
Exciter Oil	Replace once every season or every 500 hours. Use 8 oz. of MBW Ground Pounder® exciter oil. Available in 6 packs from MBW Distributors, part #01058.
Hardware	Retorque all bolts after the first eight hours of operation and check every 25 hours .
Seals and Gaskets	Replace at every overhaul or teardown and when exciter is rebuilt.
Safety Decals	Replace if they become damaged or illegible.
Special MBW Tools and Kits	#01607 DECAL SET, GP7000 #01629 TEST MAT, RUBBER

TORQUE CHART

TIGHTENING TORQUE

<u>GENERAL (Tightening Torque into Cast Iron or Steel)</u>			<u>Tightening Torque into Aluminum</u>		
SIZE	GRADE 2	GRADE 5	SIZE	GRADE 2	GRADE 5
10-24	32 in lb	40 in lb	10-24	32 in lb	32 in lb
10-32	32 in lb	32 in lb	1/4-20	70 in lb	70 in lb
1/4-20	70 in lb	115 in lb	5/16-18	150 in lb	150 in lb
1/4-28	85 in lb	140 in lb	3/8-16	260 in lb	260 in lb
5/16-18	150 in lb	250 in lb	7/16-14	35 ft lb	35 ft lb
5/16-24	165 in lb	270 in lb	1/2-13	50 ft lb	50 ft lb
3/8-16	260 in lb	35 ft lb			
3/8-24	300 in lb	40 ft lb			
7/16-14	35 ft lb	55 ft lb			
7/16-20	45 ft lb	75 ft lb			
1/2-13	50 ft lb	80 ft lb			
1/2-20	70 ft lb	105 ft lb			

Exciter bolts (item #6&7 page 9) 300 ft lb

CONVERSIONS

in lbs x 0.083 = ft lbs
 ft lbs x 12 = in lbs
 ft lbs x 0.1383 = kgm
 ft lbs x 1.3558 = N•m

REMEMBER – YOU OWN THE BEST! If repairs are needed use only MBW Inc. Parts purchased from Authorized MBW Distributors.

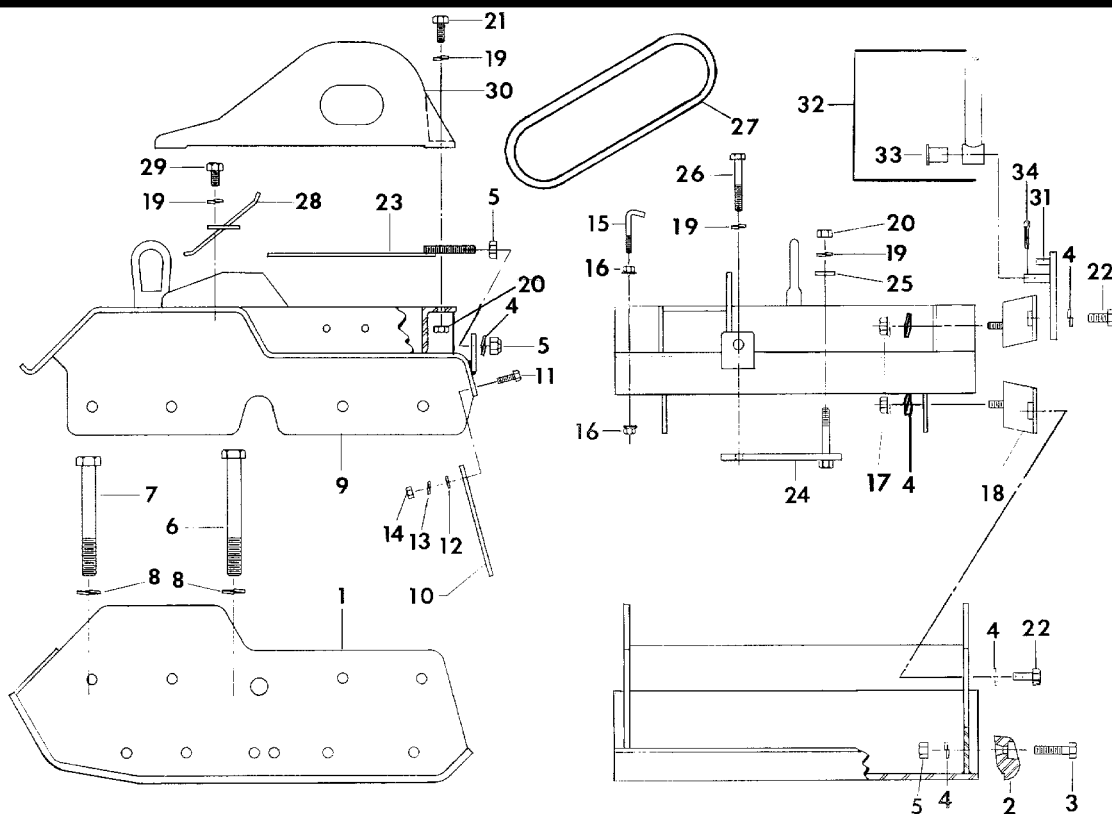
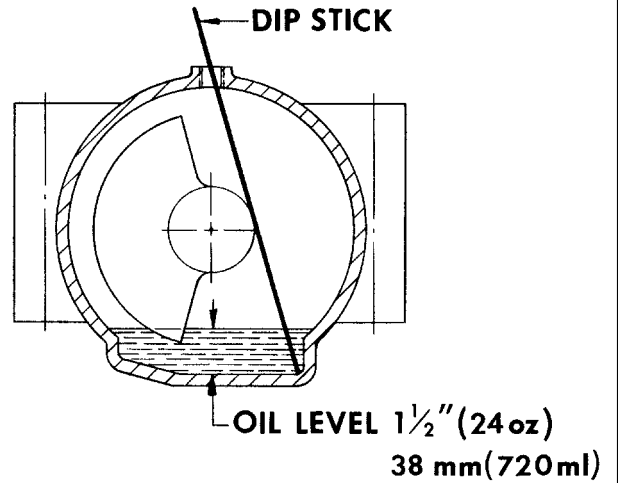
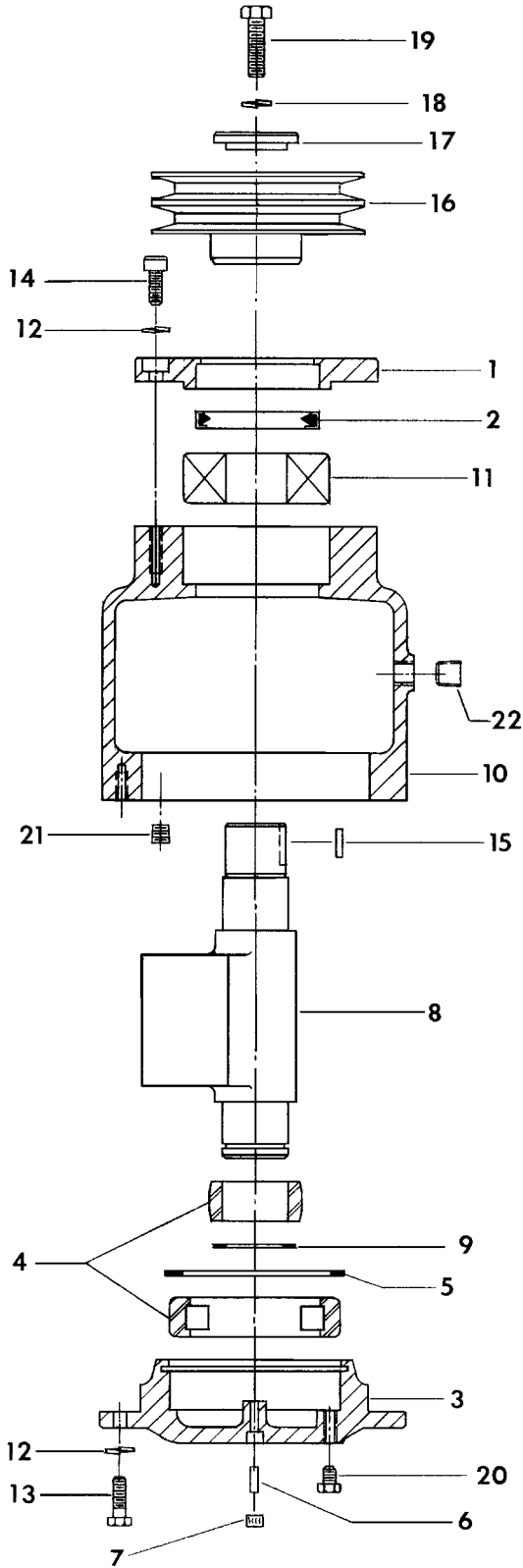


FIGURE1 MAIN ASSEMBLY DETAILS

ITEM NO. Bild-Nr. No. repere No. ítem	PART NO. Teile-Nr. No. de la pieza No. de la parte	DESCRIPTION Bezeichnung Designation Descripción	GP7000			
			GX340	L100E	K301T	
1	00716	HOUSING	1	1	1	
2	00744-LA	MOLD BAR, LEFT FRONT	1	1	1	
	00744-LB	MOLD BAR, LEFT REAR	1	1	1	
	00744-RA	MOLD BAR, RIGHT FRONT	1	1	1	
	00744-RB	MOLD BAR, RIGHT REAR	1	1	1	
3	F081318HCS	HHCS, 1/2-13 x 2-1/4	12	12	12	
4	F08LW	LOCKWASHER, 1/2	29	29	29	
5	F0813HN	HEX NUT, 1/2-13	14	14	14	
6	05940	HEX HEAD CAP SCREW (TORQUE TO 300 ft lbs)	2	2	2	
7	05939	HEX HEAD CAP SCREW (TORQUE TO 300 ft lbs)	2	2	2	
8	F12LW	LOCKWASHER, 3/4	4	4	4	
9	00813	DECK	1	1	1	
10	00746	APRON	1	1	1	
11	F042008HCS	HHCS, 1/4-20 x 1	4	4	4	
12	F05SW	PLAINWASHER, 5/16	4	4	4	
13	F04LW	LOCKWASHER, 1/4	4	4	4	
14	F0420HN	HEX NUT, 1/4-20	4	4	4	
15	00048	HOOK BOLT	2	2	2	
16	F0518FN	FLANGE NUT, 5/16-18	4	4	4	
17	F0820HN	HEX NUT, 1/2-20	12	12	12	
18	07661	SHOCKMOUNT	6	6	6	
19	F06LW	LOCKWASHER, 3/8	10	10	10	
20	F0616HN	HEX NUT, 3/8-16	2		3	
21	F061612HCS	HHCS, 3/8-16 x 1-1/2	4	4	4	
22	F081310HCS	HHCS, 3/8-13 x 1-1/4	12	12	12	
23	07795	SPACER, TIEROD (#00811 KOHLER ONLY)	1	1	1	
24	07798	MOUNTING BAR	1	1		
	07799	MOUNTING BAR	1	1		
25	00766	MOUNTING BAR			2	
	07797	SPACER (#00812 KOHLER ONLY)	1	1	1	
26	F061614HCS	HHCS, 3/8-16 x 1-3/4		4	4	
27	06333	V-BELT, B-47 (#07030 B-49 YANMAR ONLY)	2	2	2	
28	00749	DAMPENER	1	1	1	
29	F061606HCS	HHCS, 3/8-16 x 3/4	2	2	2	
30	00730	BELTGUARD	1	1	1	
31	00763	BRACKET ASSEMBLY	2	2	2	
32	00732	HANDLE ASSEMBLY	1	1	1	
33	07014	BUSHING	2	2	2	
34	F0212CP	COTTER PIN, 1/8 x 1-1/2	2	2	2	



NOTE: Use only M-B-W Ground Pounder® Oil purchased in six packs, Part No. 01058

FIGURE 3 EXITER OIL LEVEL CHECK

ITEM NO.	PART NO.	DESCRIPTION	QTY.
1	00703	COVER,FRONT	1
2	07009	SEAL	1
3	00704	COVER,REAR	1
4	07010	BEARING,CYL ROLLER	1
5	07011	RETAINING RING, INTERNAL	1
6	F0205SP	SPIROL PIN, 1/8 x 5/8	1
7	01072	FILTER	1
8	00702	SHAFT	1
9	07012	RETAINING RING,EXTERNAL	1
10	00701	HOUSING	1
11	07013	BEARING, SPHERICAL ROLLER	1
12	F06LW	LOCKWASHER, 3/8	12
13	F061610HCS	HHCS, 3/8-16 x 1-1/4	6
14	F061608SCS	SHCS, 3/8-16 x 1	6
15	00706	KEY	1
16	00705	V-PULLEY	1
17	00707	STEP WASHER	1
18	F08LW	LOCKWASHER, 1/2	1
19	F081314HCS	HHCS, 1/2-13 x 1-3/4	1
20	F061606HCS	HHCS, 3/8-16 x 3/4	2
21	F0227SPP	SOCKET PIPE PLUG, 1/8-27	1
22	F0618SPP	SOCKET PIPE PLUG, 3/8-18	1
23	00710 0710R	EXCITER ASM, (INLCUDE ALL ABOVE ITEMS) EXCITER ASM, (REBUILT)	1 1

FIGURE 2

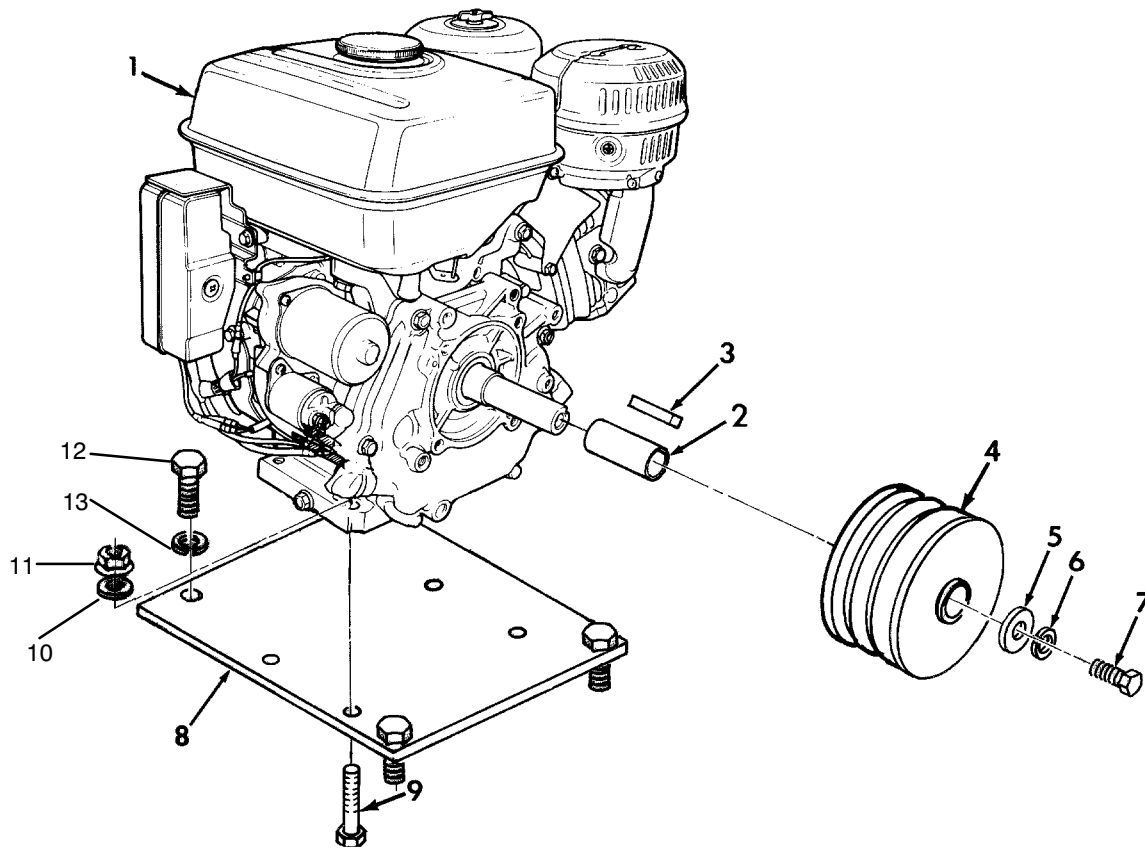


FIGURE 4 HONDA GX340 DETAILS

ITEM NO.	PART NO.	DESCRIPTION	QTY.
1	07767	ENGINE, HONDA GX340 11hp	1
2	07802	SPACER	1
3	17125	KEY	1
4	07008	CLUTCH, CENTRIFUGAL	1
5	16381	PLAINWASHER	1
6	F06LW	LOCKWASHER, 3/8	1
7	F062412HCS	HHCS, 3/8-24 x 1-1/2	1
8	07794	PLATE, ADAPTER	1
9	F061616HCS	HHCS, 3/8-16 x 2	4
10	F06SW	PLAINWASHER, 3/8	4
11	F0616FN	FLANGE WHIZ-LOCK NUT, 3/8-16	4
12	F081314HCS	HHCS, 1/2-13 x 1-3/4	2
13	F08LW	LOCKWASHER, 1/2	4
	F0813HN	HEXNUT 1/2-13	2
	12614	EXTENSION, MUFFLER (NOT SHOWN)	1
	K275679	MUFFLER (NOT SHOWN)	1

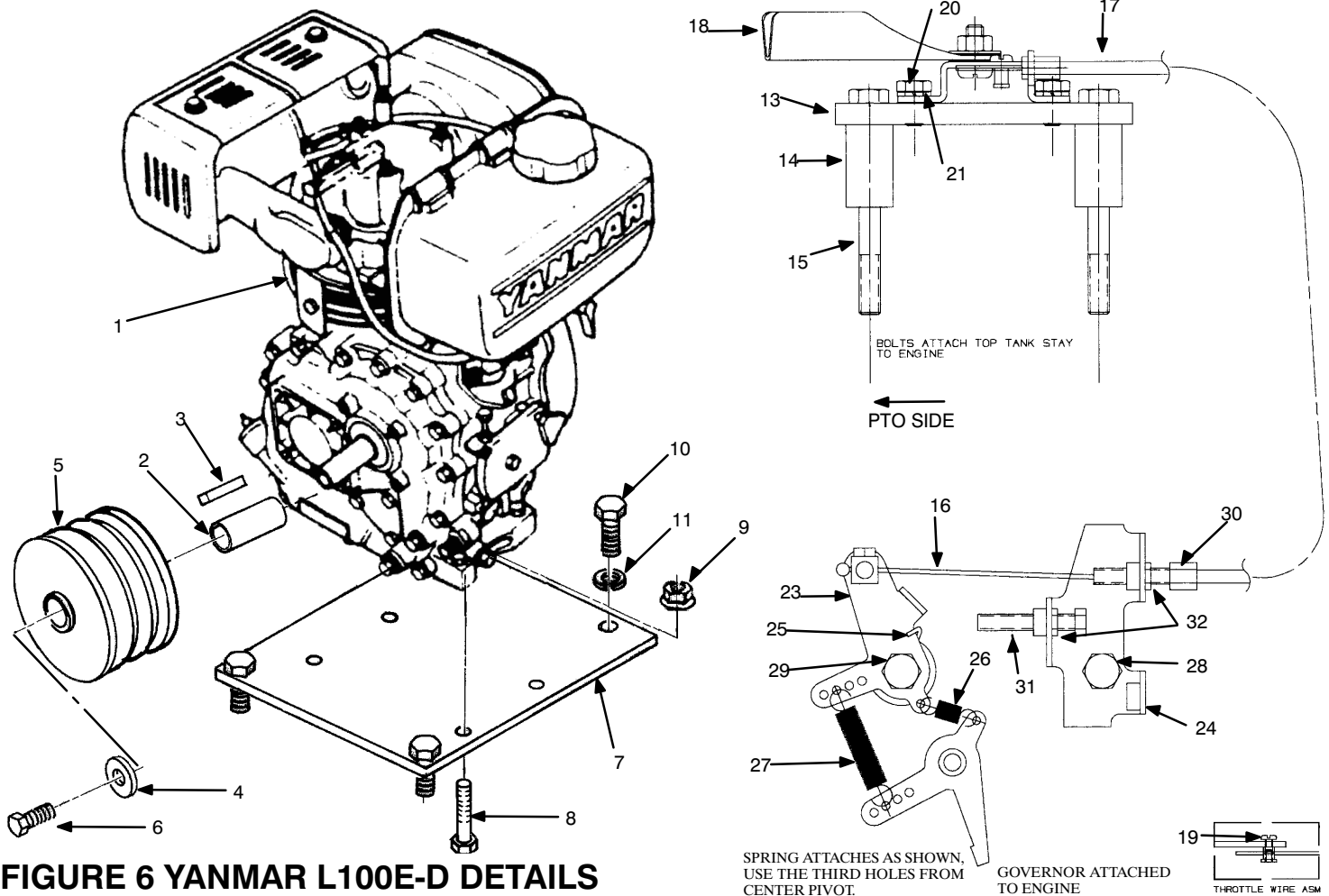
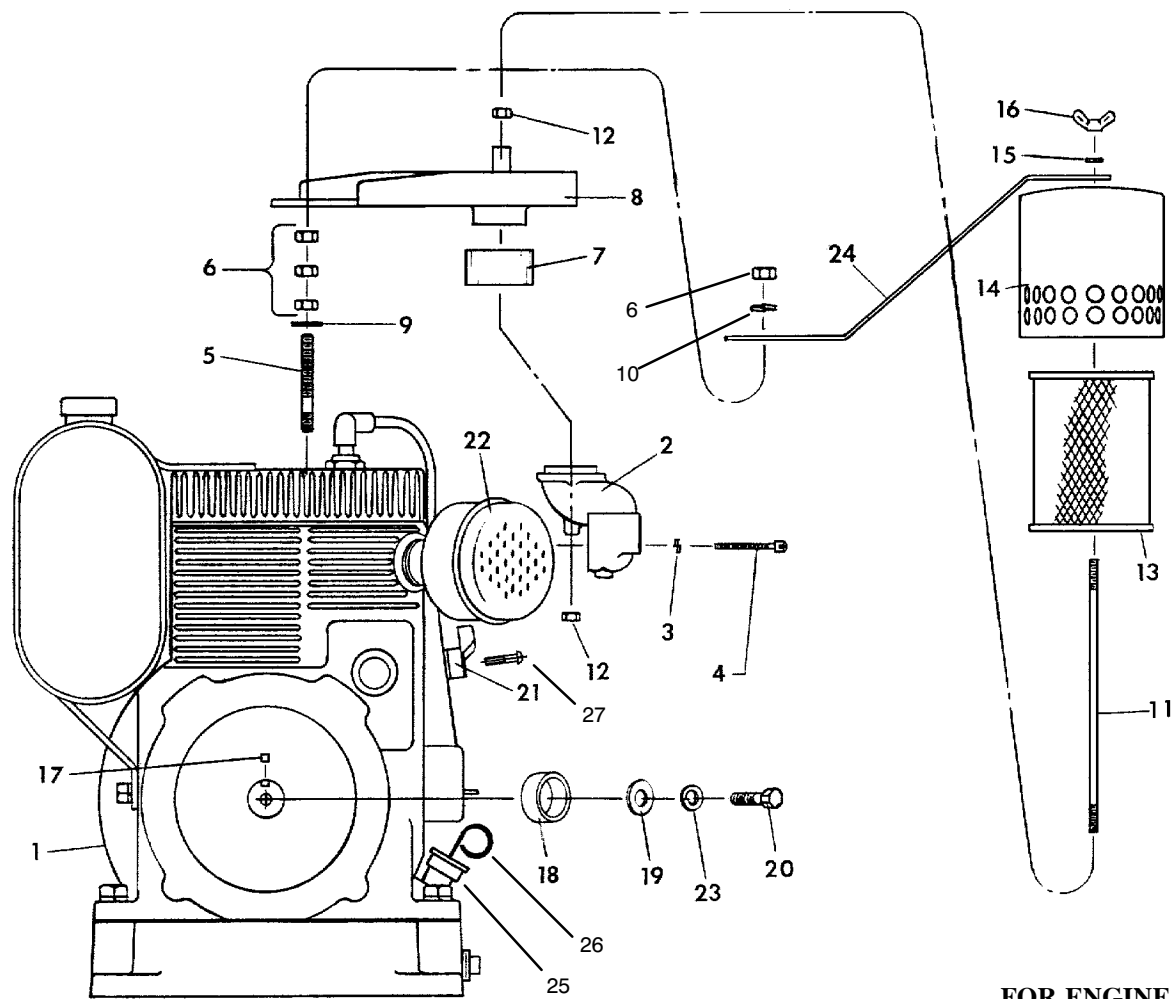


FIGURE 6 YANMAR L100E-D DETAILS

ITEM NO.	PART NO.	DESCRIPTION	QTY.
1	11929	ENGINE, YANMAR L100AE-D	1
2	07802	BUSHING, PTO	1
3	17125	KEY	1
4	05714	WASHER, PILOT	1
5	07008	CLUTCH, CINTRIFUGAL	1
6	F072010SCS	SHCS 7/16-20 x 1-1/4	1
7	07794	PLATE, ADAPTER	1
8	F061616HCS	HHCS, 3/8-16 x 2	4
9	F0616FN	FLANGE NUT, 3/8-16	4
10	F081314HCS	HHCS, 1/2-13 x 1-3/4	2
11	F08LW	LOCKWASHER, 1/2	4
	F0813HN	HEX NUT, 1/2-13	2
13	02558	MOUNT, THROTTLE	1
14	02559	SPACER, .75x.38x1.2	2
15	08388	HHCS, M 8x80 mm	2
16	07536	WIRE, THROTTLE	1
17	06241	CASING	1
18	02198	THROTTLE CONTROL ASM	1
19	05477	SWIVEL (INCLUDED W/#02198)	1
20	F042004HCS	HHCS, 1/4-20 x 1/2	2
21	F04LW	LOCKWASHER, 1/4	2
23	Z114252-66051	LEVER, SPEED CONTROL	1
24	Z114252-66112	BRACKET, ACCELERATOR	1
25	Z114252-66250	SPRING, RETURN	1
26	Z114250-66200	SPRING, SHORT	1
27	Z114970-66010	SPRING, LONG	1
28	Z26476-060142	BOLT, M 6x14 mm	1
29	Z26106-060202	BOLT, M 6x20 mm	1
30	Z130100-67080	BOLT, ADJUSTING	1
31	Z114250-66440	BOLT, ADJUSTING	1
32	Z26757-060002	LOCKNUT, M 6	1



**FOR ENGINE GASKETS
(NONE SHOWN)
ORDER KIT #237395**

FIGURE 8 KOHLER K301T DETAILS

ITEM NO.	PART NO.	DESCRIPTION	QTY.
1	00802 07023	ENGINE ASM, KOHLER K301T (INCLUDES ALL ITEMS BELOW) ENGINE, KOHLER K301T 12hp	1 1
2	07025	ELBOW	1
3	F03LW	LOCKWASHER, #10	3
4	F033218RMS K237522	FILLISTERHEAD CAP SCREW, #10-32 x 2-1/4	3
5		STUD	2
6	F0616HN	HEX NUT, 3/8-16	8
7	07027	HOSE	1
8	06978	BRACKET	1
9	F06SW	PLAINWASHER, 3/8	2
10	F06LW	LOCKWASHER, 3/8	3
11	00752	STUD	1
12	F0518FN	FLANGE NUT, 5/16-18	2
13	07017	FILTER, ELEMENT	1
14	07035	COVER	1
15	F05SW	PLAINWASHER, 5/16	1
16	01294	WINGNUT, 5/16-18 ELASTIC	1
17	01160	KEY	1
18	00769	SPACER	1
19	06638	PLAINWASHER	1
20	F072008HCS K235160	HHCS, 7/16-20 x 1	1
21		CONTROL	1
22	K275679	MUFFLER	1
23	F07LW	LOCKWASHER, 7/16	1
24	07716	BRACE	1
25	K237012	TUBE	1
26	K237013	DIPSTICK	1
27	F04AB10RTS	RHTS, #14 x 1-1/4 TYPE A	1

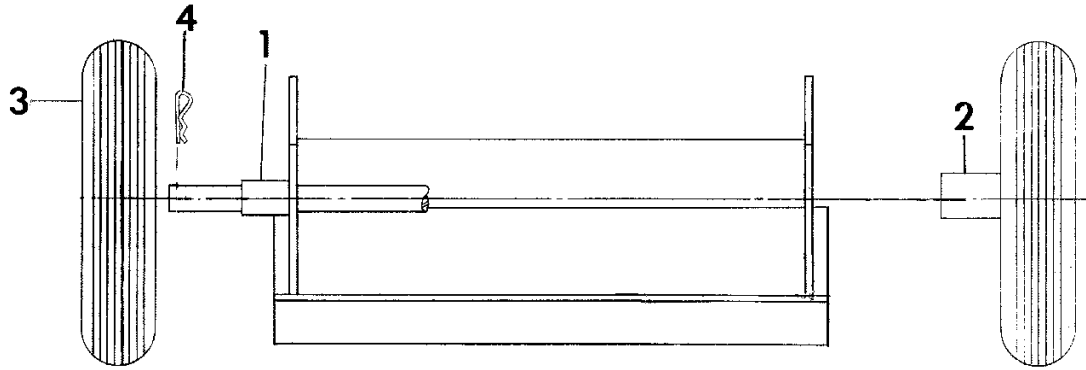


FIGURE 7 JOB CART DETAILS

ITEM NO.	PART NO.	DESCRIPTION	QTY.
1	00748	AXLE	1
2	05601	WHEEL	1
3	07019	WHEEL	1
4	01056	HAIRPIN	2
5	07018	CART, JOB (INCLUDES ALL ABOVE ITEMS)	1