

M18 SCREEDEMON™

POWERED BY M18™ REDLITHIUM™ BATTERY



SCREEDEMON



**POWERED BY
M18 REDLITHIUM**



BUILDING A BETTER JOBSITE EXPERIENCE

[500M]

[500MLP]

MBW.COM



BATTERY SCREEDEMON

BACKGROUND

When MBW develops a new product, we look across the industry for where improvements can be made. Portable wet screeds suffered 3 serious shortcomings:

MECHANICAL

Wet screeds were prone to high maintenance, especially in drive mechanisms between the engine and exciter. The ScreeDemon employs simple, durable, low cost rubber isolators to drive the eccentric.

FUNCTIONAL

Most screed and screed bar combinations produce irregular vibration along the length of the screed bar. Not only is the concrete exposed to highly variable levels of vibration, but cream levels vary from spot to spot along the screed bar. The back-to-back triangular construction of the ScreeDemon bar is extremely rigid and minimizes variability in the transmission of vibration. Most screeds bolt to the screed bars. Hardware threads are compromised by the concrete and assembling or removing the screed becomes such a problem that crews often don't disassemble for cleaning or transport. The ScreeDemon simply clamps to the specially designed bar. No holes to weaken the screed bar. No threads to complicate assembly/disassembly. The ScreeDemon goes together and comes apart in seconds.

OPERATOR HEALTH & SAFETY

All wet screeds tested by MBW exposed operators to excessive hand/arm vibration. The ScreeDemon's patented mount retention method enables use of low durometer isolators without loss of operator control. Hand/arm vibration is 50 to 90% lower than competitive screeds.

US & International Patents

M18™ REDLITHIUM™ BATTERY TEST:

Many variables can affect the run time - the following results are not guaranteed

5Ah Run time at full throttle: 27 minutes

Recharge time: 49 minutes

9Ah Run time at full throttle: 50 minutes

Recharge time: 86 minutes

12Ah Run time at full throttle: 65 minutes

Recharge time: 120 minutes



MODEL	500M
Operating Weight	33.5lbs (15.2kg) (Including 12 Ah battery)
Powered by	Milwaukee Tool M18™ REDLITHIUM™ HIGH OUTPUT™ batteries
Maximum Power	630W

Magnesium Bar Specifications

BARS	WIDTH	WEIGHT
17804	4 ft (1.22 m)	8.1 lb (3.7 kg)
17806	6 ft (1.83 m)	12.1 lb (5.5 kg)
17808	8 ft (2.44 m)	16.1 lb (7.3 kg)
17810	10 ft (3.05 m)	20.1 lb (9.1 kg)
17812	12 ft (3.66 m)	24.0 lb (10.9 kg)
17814	14 ft (4.27 m)	28.0 lb (12.7 kg)
17816	16 ft (4.88 m)	32.0 lb (14.5 kg)
17818*	18 ft (5.49 m)	36.0 lb (16.3 kg)

*18 ft bars require two ScreeDemon power units.

() Metric Measurements, Specifications subject to change without notice.

Aluminum Bar Specifications

BARS	WIDTH	WEIGHT
23006	6 ft (1.83 m)	16.5 lb (7.5 kg)
23008	8 ft (2.44 m)	22.0 lb (9.9 kg)
23010	10 ft (3.05 m)	27.5 lb (12.5 kg)
23012	12 ft (3.66 m)	33.0 lb (14.9 kg)

() Metric Measurements, Specifications subject to change without notice.



EXTRA RIGID, DOUBLE TRIANGULAR, MAGNESIUM SCREED BAR

- minimizes variability in vibration
- clamps to ScreeDemon - no holes or hardware through bar
- is attached or removed from screed in seconds for cleaning/transport
- allows for offsetting of screed for working under protrusions

BATTERY SCREEDEMON

FEATURES

VARIABLE THROTTLE

Allows instant response to concrete conditions.

BATTERY-POWERED

Powered by M18™ REDLITHIUM™
Reliable and convenient with no motor maintenance and no motor component failures.

CENTRAL LIFTING POINT

Is perfectly balanced with any length screed bar.

PATENTED

Dual level, anti-vibration system. Unique system reduces vibration transmitted to the operator yet allows complete control of the unit.

SEALED EXCITER

Oversized bearing design requires no maintenance.

MAGNESIUM SCREED BAR

Lightweight. No cut-out or attached hardware. Easy cleanup. Available in 2 foot increments from 4' to 18'.

BATTERY & CHARGER



MAIN HANDLE

Walk-in design allows easy access to lifting points, tool-free adjustment, folds for easy transport and storage.

LIGHTS

LED lights shine 6 to 8 ft per side for darker work areas.

HIGH STRENGTH

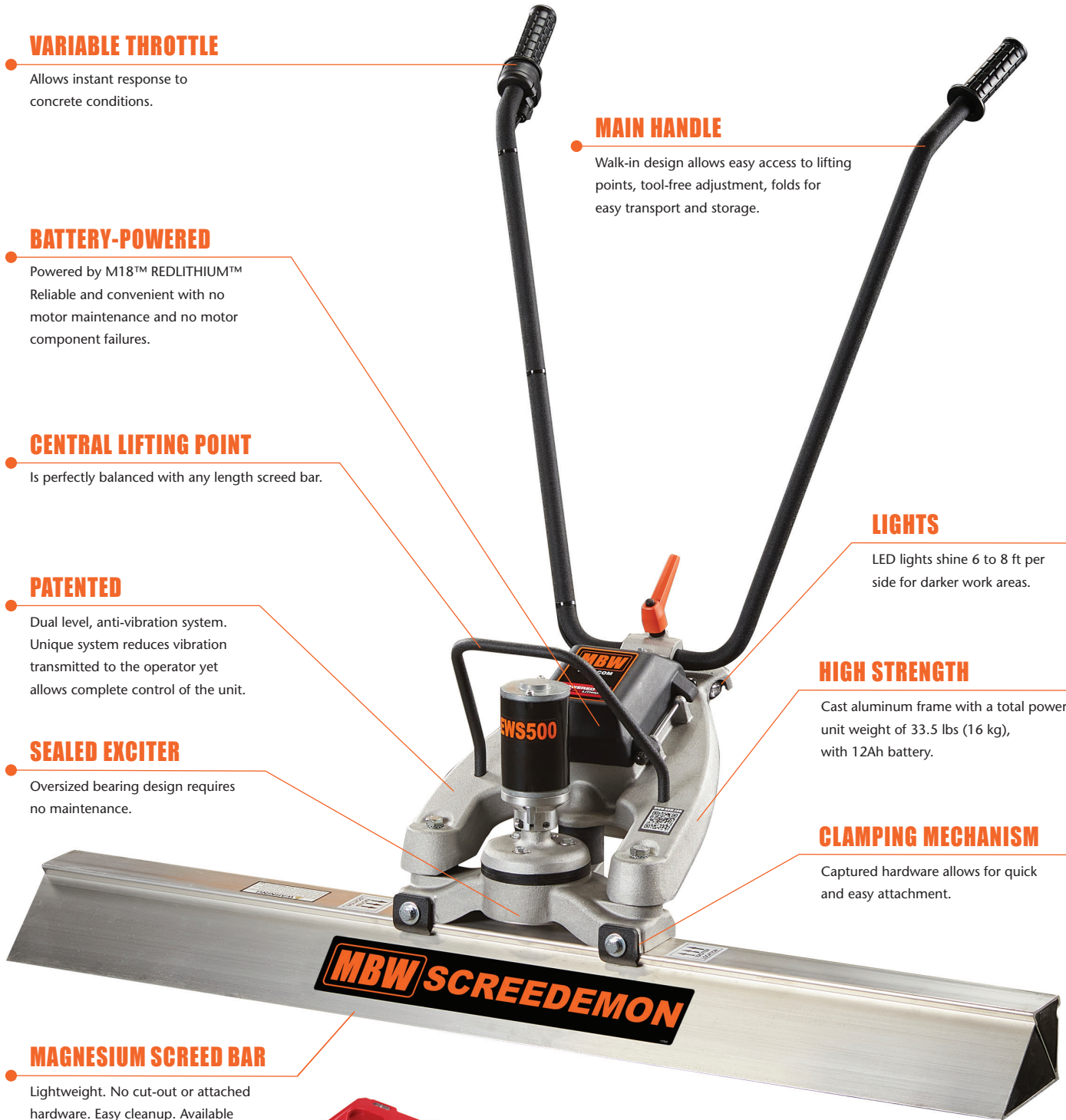
Cast aluminum frame with a total power unit weight of 33.5 lbs (16 kg), with 12Ah battery.

CLAMPING MECHANISM

Captured hardware allows for quick and easy attachment.

WRENCH & BATTERY BOX

Inside the battery box is a wrench for fixing the bar to the drive unit. The battery box has drainage holes to avoid moisture build up.



ABOUT MBW INC.

Since 1967, MBW has been at the forefront of manufacturing innovative compaction, concrete, and related equipment for the construction industry.

WHAT SETS MBW APART?

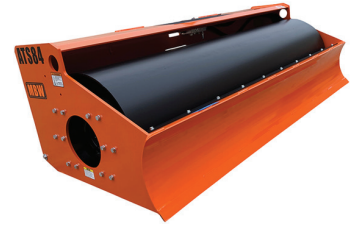
MBW doesn't simply follow the crowd; we innovate. Each new engineering project begins with the belief that there is always room for improvement—whether in productivity, maintenance, longevity, user safety, or cost-effectiveness. Our research and development often lead to groundbreaking solutions that set new standards in the industry. MBW products enhance productivity, provide the safest tools in their class, address long-standing maintenance issues, and extend product lifespans. Our mission is to offer equipment users significant, tangible value—clear reasons to choose MBW products.



SCREEDS



TROWELS



ROLLER ATTACHMENTS



RAMMERS



VIBRATORY PLATES



MBW Inc.
250 Hartford Road • P.O. Box 440
Slinger, Wisconsin • 53086-0440 • USA
Ph: 800-678-5237 or 262-644-5234 • Fax: 262-644-5169
E-mail: mbw@mbw.com • Website: www.mbw.com

MBW Europe Ltd.
Units 2 & 3 Cochrane Street • Bolton BL3 6BN • England UK
Ph: 44 (0) 1204 387784 • Fax: 44 (0) 1204 387797
E-mail: mbwuk@mbw.com or mbweurope@mbw.com
Europe Website: www.mbweurope.com



AUTHORIZED DISTRIBUTOR