

OPERATOR'S SAFETY AND SERVICE MANUAL



VAPOR EXTRACTION UNIT

This manual covers the following serial numbers
and higher for each model listed:

85422D.....8540153



UTILITY DIVISION

MBW, Inc.

250 Hartford Rd • PO Box 440
Slinger, WI 53086-0440
Phone: (262) 644-5234
Fax: (262) 644-5169
Email: mbw@mbw.com
Website: www.mbw.com

MBW Europe Ltd.

Units 2&3 Cochrane Street
Bolton BL3 6BN, England
Phone: 44 (0) 01204 387784
Fax: 44 (0) 01204 387797
E-mail: Saleseurope@mbw.com
Website: www.mbweurope.com



L19266 / 6.23.Y
©MBW, Inc. 2023
Printed in the USA

TABLE OF CONTENTS

SAFETY INFORMATION	1	Sensor Maintenance	7
Introduction	1	Sensor Relay/Alarm Testing	7
Safety Precautions	1	Oiling the blower for long term storage	7
SPECIFICATIONS	3	SERVICE	8
OPERATION	4	Torque Chart	8
Introduction	4	Service Tools	8
Before Starting & Operating	4	Replacing Shaft Coupler	8
Assembling Probes	4	Parts Replacement Cycles and Tolerances	9
Starting Engine	4	REPLACEMENT PARTS	11
Operating	4	Main Assembly	12
Stopping Engine	5	Canister and Blower Assembly	14
MAINTENANCE	6	Sensor Stand Assembly	16
Maintenance Schedule	6	Control Assembly	18
Engine Maintenance	6	Plug Assembly	20
Draining Fuel Tank	6	Door Assembly	22
Engine Speed	6	Engine Assembly	24
Blower Maintenance	6	Probe and Hose Assemblies	26
Cleaning Blower Air filter	6	Wiring Schematic	28
		WARRANTY	30



WARNING



CALIFORNIA PROPOSITION 65 WARNING

Engine exhaust and some of its constituents are known in the state of California to cause cancer, birth defects, and other reproductive harm.

SAFETY INFORMATION

Introduction



This Safety Alert Symbol is used to call attention to items or operations which may be dangerous to those operating or working with this equipment.

The symbol can be found throughout this manual and on the unit. Please read these warnings and cautions, along with all decals, carefully before attempting to operate the unit. Make sure every individual who operates or works with this equipment is familiar with all safety precautions.



WARNING



GENERAL WARNING. Indicates information important to the proper operation of the equipment. Failure to observe may result in damage to the equipment and/or severe bodily injury or death.



CAUTION



GENERAL CAUTION. Indicates information important to the proper operation of the equipment. Failure to observe may result in damage to the equipment.

Safety Precautions



LETHAL EXHAUST GAS: An internal combustion engine discharges carbon monoxide, a poisonous, odorless, invisible gas. Death or serious illness may result if inhaled. Operate only in a properly ventilated area. **NEVER OPERATE IN A CONFINED AREA!**



DANGEROUS FUELS: Use extreme caution when storing, handling and using fuels as they are highly volatile and explosive in vapor state. Do not add fuel while engine is running. Stop and cool the engine before adding fuel. **DO NOT SMOKE!**



SAFETY GUARDS: It is the owner's responsibility to ensure that all guards and shields are in place and in working order.



IGNITION SYSTEMS: Breakerless, magneto, and battery ignition systems can cause severe electrical shocks. Avoid contacting these units or their wiring.



SAFE DRESS: Do not wear loose clothing, rings, wristwatches, etc. near machinery.



NOISE PROTECTION: Wear OSHA specified hearing protection devices.



EYE PROTECTION: Wear OSHA specified eye shields, safety glasses, and sweat bands.



FOOT PROTECTION: Wear OSHA specified steel-tipped safety shoes.

HEAD PROTECTION: Wear OSHA specified safety helmets.



OPERATOR: Keep children and bystanders off and away from the equipment.

REFERENCES: For details on safety rules and regulations in the United States, contact your local Occupational Safety and Health Administration (OSHA) office. Equipment operated in other countries must be operated and serviced in accordance and compliance with any and all safety requirements of that country. The publication of these safety precautions is done for your information. Sencore Construction Products (Sencore) does not by the publication of these precautions, imply or in any way represent that these are the sum of all dangers present near Sencore equipment. If you are operating Sencore equipment, it is your responsibility to insure that such operation is in full accordance with all applicable safety requirements and codes. All requirements of the United States Federal Occupational Safety and Health Administration Act must be met when operated in areas that are under the jurisdiction of that United States Department.

Safety Decals

Carefully read and follow all safety decals. Keep them in good condition. If decals become damaged, replace as required. If repainting the unit, replace all decals. Decals are available from authorized Sencore distributors. Order the decal set listed on the following page.

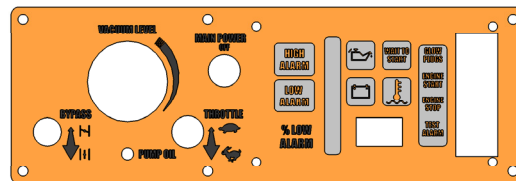
**DIESEL
FUEL**

01623
(ON FUEL TANK)

CAUTION

DO NOT expose sensor to shock or vibration.
Allow sensor to finish warm-up cycle prior to use.
Calibrate sensor prior to first use, and as directed by manual

19257
(ON SENSOR STAND)



20123

VAPOR EXTRACTION UNIT

20241

WARNING

Operating, servicing and maintaining this equipment can expose you to chemicals, including engine exhaust, phthalates and lead, which are known to the state of California to cause cancer and birth defects or other reproductive harm. Avoid breathing engine exhaust. Do not operate equipment in confined areas. For more information go to www.P65Warnings.ca.gov

21820

MBW

20239

U.S. PATENT 7,210,336

19380

OPERATING INSTRUCTIONS

1. Ensure gas concentration in work area is safe for open ignition sources. DO NOT use machine in areas that are unsafe.
2. Open bypass valve fully, close all vacuum supply valves on canister, open valves on probes.
3. Plug sensor lead into socket below engine control box.
4. The "Wait to start" light will light during the sensor's 4 minute warm-up routine. Engine will not run until this period is complete.
5. Start engine. If cold, wait for glowplugs.
6. Warm up engine at idle.
7. Run engine speed up to approximately 30%.
8. While watching LEL percent on sensor, slowly begin opening vacuum supply valve.

NOTE: Gas stream through the VEU must remain below 25% LEL. If Low alarm is triggered, close vacuum supply valve, open bypass valve, and start again. If High alarm is reached, engine will shut down. Press "Reset" button, and start at step 5.

9. After vacuum supply valve is open fully, run engine up to full throttle, and begin to close bypass valve. See note above.
10. After bypass valve is closed fully, run engine as needed to evacuate ground of gas.
11. If desired, turning off individual probes can help locate leak.
12. Before shutting down engine, allow it to idle 1-2 minutes to cool.

19259

CAUTION

Read the Operating Instructions before operating this piece of equipment.

Keep unauthorized and untrained people away from this equipment.

ROTATING & MOVING PARTS!
Make sure all guards and safety devices are in place.

Wear approved hearing protection, foot protection, eye protection and head protection.

SHUT OFF the motor before servicing or cleaning.

DO NOT RUN in an enclosed area. The engine produces carbon monoxide, a **POISONOUS GAS**.

Failure to comply could result in serious bodily injury.

13483

SENSOR STAND PLUG

Engine will not run unless sensor is plugged in

19240

19240

WARNING



High suction can cause serious injury.
Keep all body parts away from vacuum ports.

19242

VAPOR EXTRACTION UNIT

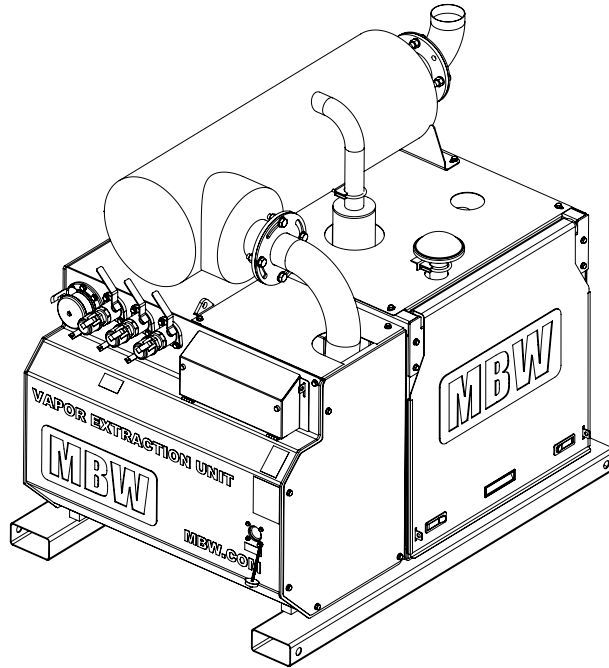
MBW

MBW.COM

20240

Safety Decals

SPECIFICATIONS



Operating Weight	1430 LBS (648 KG)
Height	47.5" (113 cm)
Width	43" (109 cm)
Length	65" (165cm)
Engine	Isuzu 3CH1
Recommended Engine RPM	2500 rpm
Fuel Consumption	1.0 Gal/hr
Fuel Capacity	8 gallons (30.3L)
Blower	Tuthill 850 cfm
Recommended Vacuum	6"Hg
Operating Noise Level¹	90-100 db
Gas Monitor	Industrial Scientific Itrans w/ LEL
Alarm Threshold	35% LEL
Engine Stop Threshold	50% LEL
Max Flow Rate Per Probe	19 cfm

Specifications subject to change without notice

1. Noise levels are taken at the operating position and are based on operating conditions. Background noise will increase noise levels.

OPERATION

Introduction

This parts manual contains only standard parts. Variations of these parts as well as other special parts are not included. Contact your local MBW distributor for assistance in identifying parts not included in this manual.

Before Starting & Operating

- Operating VEU creates a possible source of ignition for flammable gas plume. **BE CERTAIN ATMOSPHERE IS SAFE BEFORE OPERATING THIS MACHINE!**
- REMEMBER! It is the owner's responsibility to communicate information on the safe use and proper operation of this unit to the operators.
- Review ALL of the Safety Precautions listed on page 1 of this manual.
- Familiarize yourself with the operation of the machine and confirm that all controls function properly.
- Know how to STOP the machine in case of an emergency.
- Make sure hands, feet, and clothing are at a safe distance from any moving parts or high suction areas.
- OIL LEVEL - Check the oil level in the engine. For more information see "Lubrication" under the respective engine's "Owners Manual" or the Maintenance section of this manual.
- ENGINE AIR CLEANER - Check to ensure element is in good condition and properly installed.
- BLOWER AIR CLEANER - Check to ensure element is in good condition and properly installed
- FUEL SUPPLY - The engines on MBW equipment require an automotive grade of clean, fresh, diesel fuel.
- FUEL FILTER - If clogged or damaged, replace.
- GAS SENSOR - Be familiar with operation of gas sensor. Refer to sensor manual. Be certain that the sensor has been calibrated and is in working order. MBW recommends the sensor be calibrated at least every 3 months.

Assembling Probes

1. Place probes into ground
2. Connect probes to VEU with hose assemblies.

Note: The MBW VEU probes can be connected to the VEU in many ways. Each utility should develop

their own best practice to make the connections. To avoid a significant pressure drop, MBW recommends not connecting more than 6 (six) probes to a single 1-1/2" branch hose. If more probes are desired, they should be connected to a new branch line coming off the VEU.

3. Open all valves on VEU probes.
4. Cap all open hose ends with CAM-Loc plugs/caps.
5. Close unused manifold valves on VEU.
6. Fully open Air-Bypass valve before starting engine.

Starting Engine

For detailed instructions refer to the engine "Owner's Manual".



WARNING



Ensure gas concentration in work area is safe for open ignition sources. DO NOT use machine in areas that are unsafe.



WARNING



Ensure sampling line and cup are in place at bottom of sensor. DO NOT use machine if the sampling line is not connected.

7. Plug sensor/vacuum combo plug into socket on canister housing.

Note: Engine will NOT run without sensor plugged in.

8. When power is supplied to the sensor stand assembly the sensor will start a warm up cycle. **This cycle will take approximately 4 minutes and engine will NOT RUN until the "Wait to Start" light turns off.**
9. Open bypass valve fully, close all vacuum supply valves on canister, open valves on probes.
10. Turn toggle switch to "ON".
11. Press glow plug button if engine is cold. Glow plugs will cycle each time button is pressed.
12. Press engine start button to engage starter.
13. Allow engine to warm up for one or two minutes.

Operating

1. Ensure proper operation of gas sensor.
2. Run engine speed up to approximately 30%.

3. While watching LEL percent on sensor or bar graph on control panel, slowly begin opening vacuum supply valve.



WARNING



Gas stream through the VEU must remain below 35% LEL. If Low alarm is triggered, close vacuum supply valve, open bypass valve, and start at step 3. If High alarm is reached, engine will shut down. Engine will not start until LEL is below 50%.

4. After vacuum supply valve is open fully, run engine up to full throttle, and begin to slowly close the bypass valve. See note above. Operating point will be determined by these factors:
 - Configuration of probes
 - Gas concentration in ground
 - Recommended engine speed

• Recommended vacuum level

5. After bypass valve is closed fully, run engine as needed to evacuate ground of gas.
6. If desired, turning off individual probes can help locate leak.

Stopping Engine

1. Fully open air-bypass valve to unload engine.
2. Move throttle to idle position.
3. Let engine idle for one or two minutes.
4. Press engine stop button, or turn off toggle switch.



WARNING



Always stop the engine before:

Adding fuel.

Leaving the equipment unattended for any amount of time.

Before making any repairs or adjustments to the machine.

MAINTENANCE



WARNING



Always exercise the stopping procedure before servicing or lubricating the unit.

After servicing the unit, replace and fasten all guards, shields, and covers to their original positions before resuming operation.



CAUTION



Always verify fluid levels and check for leaks after changing fluids.

Do not drain oil onto ground, into open streams, or down sewage drains.

Maintenance Schedule

SYSTEM	MAINTENANCE	DAILY	EVERY 25 HOURS	EVERY 300 HOURS	YEARLY
Vac air filter	Check and clean	X			
Engine	Refer to engine operator/owner manual	X			
Fuel	drain tank				X
Hardware	Check and tighten as needed ¹		X		X
In Line Fuel Filter	Replace			X	X
Blower	Refer to Blower operators/owners manual	X			
Gas Sensor	Calibrate ² (Refer to Gas Sensor manual)				4x
	Test	X			

1. Check all hardware after the first 5 hours of use, then follow the maintenance schedule.
2. Calibrate sensor before using VEU. Sensor is NOT calibrated from the factory.

4. Properly dispose of drained fuel.

Engine Maintenance

Refer to the engine owner's manual for maintenance intervals and procedures.

- Check the engine air cleaner element at least once daily.
- Check the engine oil level by removing the dipstick (the engine must be level). The oil level should be between the marks on the dipstick. See the "Check Engine Oil" section of the engine "Owner's Manual" for information.
- See the "Change Engine Oil" section of the engine "Owner's Manual" for information on the oil change intervals.
- Disconnect battery for long term storage.

Draining Fuel Tank

Refer to Main Assembly, page 12.

1. Remove brackets holding tank.
2. Loosen hose clamps and remove hoses.
3. Drain until all water and contaminants are cleared.

Engine Speed

Engine speed is factory set according to the speed listed in the Recommended Engine RPM, page 3 of this manual. Refer to the engine owners manual for procedure on setting operating speed if necessary.

Blower Maintenance

The blower is a CP 5009 built by M-D Pneumatics. It contains both a grease and an oil bath lubrication system. Refer to blower manual for service instructions. More information can be found at www.mdpneumatics.com

Cleaning Blower Air filter

Refer to Canister and Blower Assembly, page 14.

1. Remove outer knob (# 18) and outer door (#6).
2. Remove inner knob (# 17) and Inner door (# 28).
3. Slide filter out of housing.
4. Remove prefilter and wash with clean warm water.

5. Wash filter with low pressure water, Such as from a garden hose. DO NOT use a high pressure sprayer. If any holes or thin spots are apparent in filter, It must be replaced.
6. Let filters air dry.
7. Put prefilter around filter, and slide into canister housing. The rear of the filter is supported by a tab welded to the back wall of canister.
8. Install front cover making sure filter is straight and seated against rear wall and cover. Tighten knob snugly against cover.
9. Install front cover and knob.

Sensor Maintenance

Sensor must be calibrated before first use. Sensor is NOT calibrated at the factory.

Sensor programming mode is password protected. To enter programming mode, remove cover of sensor and enter "Mode, Mode, Up, Down, Up, Enter." For non-intrusive operation, see sensor manual. See Sensor manual for further instructions.

The sensor is a sensitive piece of electronic equipment and should be treated as such. DO NOT expose the sensor to vibration. DO NOT expose to temperatures below -4° F or above 122° F.

Sensor Relay/Alarm Testing

1. Plug Electronics stand into VEU.
2. Start engine after sensor warm-up is complete. Refer to Starting Engine, page 5.
3. Press test button on control panel. Engine should shut down within seconds. Alarm and all lights should activate. If it does not, Do Not use the VEU until it is fixed.

Oiling the blower for long term storage

If the VEU will be stored more than one week without use, it is required that the user oil the blower to prevent surface corrosion or the internal vanes.

1. Run the machine at idle, with the bypass valve in the open position.
2. Remove the small rubber cap located under the vacuum gauge.
3. Spray a light lubricating oil, such as WD-40 into the hole for several seconds.

The spray must not contain silicone. Silicone may damage the sensor.

4. Replace the rubber cap and stop the machine.

SERVICE

Assembly and disassembly should be performed by a service technician who has been factory trained on MBW equipment. The unit should be clean and free of debris. Pressure washing before disassembly is recommended.

- Prior to assembly, wash all parts in a suitable cleaner or solvent.
- Check moving parts for wear and failure. Refer to the Replacement section in this manual for tolerance and replacement cycles.
- All shafts and housings should be oiled prior to pressing bearings. Also, ensure that the bearings are pressed square and are seated properly.
- All bearings should be replaced when rebuilding any exciter or gearbox.
- All gaskets and seals should be replaced after any disassembly.

Torque Chart

SIZE	GRADE 2	GRADE 5	GRADE 8
1/4-20	49 in·lbs	76 in·lbs	9 ft·lbs
1/4-28	56 in·lbs	87 in·lbs	10 ft·lbs
5/16-18	8 ft·lbs	13 ft·lbs	18 ft·lbs
5/16-24	9 ft·lbs	14 ft·lbs	20 ft·lbs
3/8-16	15 ft·lbs	23 ft·lbs	33 ft·lbs
3/8-24	17 ft·lbs	26 ft·lbs	37 ft·lbs
7/16-14	24 ft·lbs	37 ft·lbs	52 ft·lbs
7/16-20	27 ft·lbs	41 ft·lbs	58 ft·lbs
1/2-13	37 ft·lbs	57 ft·lbs	80 ft·lbs
1/2-20	41 ft·lbs	64 ft·lbs	90 ft·lbs
9/16-12	53 ft·lbs	82 ft·lbs	115 ft·lbs
5/8-11	73 ft·lbs	112 ft·lbs	159 ft·lbs
5/8-18	83 ft·lbs	112 ft·lbs	180 ft·lbs
3/4-16	144 ft·lbs	200 ft·lbs	315 ft·lbs
1-8	188 ft·lbs	483 ft·lbs	682 ft·lbs
1-14	210 ft·lbs	541 ft·lbs	764 ft·lbs
1-1/2-6	652 ft·lbs	1462 ft·lbs	2371 ft·lbs
M 6	3 ft·lbs	4 ft·lbs	7 ft·lbs
M 8	6 ft·lbs	10 ft·lbs	18 ft·lbs
M 10	10 ft·lbs	20 ft·lbs	30 ft·lbs
CONVERSIONS in·lbs x 0.083 = ft·lbs ft·lbs x 12 = in·lbs			

SIZE	GRADE 2	GRADE 5	GRADE 8
ft·lbs x 0.1383 = kg·m			
ft·lbs x 1.3558 = N·m			

Service Tools

PART NO.	DESCRIPTION
19279	KIT, SENSOR CALIBRATION
20350	SERVICE KIT, VEU, ISUZU
19263	BLOWER OIL, QUART

Replacing Shaft Coupler

Refer to Main Assembly, page 12.

1. Remove the four nuts and bolts securing Silencer inlet adapter (# 16) to the silencer(# 20)
2. Remove the Blower End Side panel (# 6)
3. Remove the air cleaner outer door.
4. Loosen the six mounting bolts (# 44) which secure the canister weldment to the frame. Remove all but the front most bolt on the air cleaner side.
5. Carefully pivot the blower end of the weldment away from the engine, making sure not to stress any wiring or cables. It will only be necessary to move the end about 3" to remove the coupler (# 3).
6. Replace the coupler and slide the canister back into place, aligning the splines of the drivers and coupler.
7. Ensure that the shoulders of the drivers are flush with the ends of the coupler, and that the shafts are still aligned.
8. Replace the canister mounting bolts (# 44), sealing the three bolts in the air filter end with silicone sealant.
9. Reinstall the four bolts securing the silencer inlet adapter to the silencer and the blower end side panel.

Parts Replacement Cycles and Tolerances

Engine Components	Refer to your engine manufacturer's Owner's Manual.
Hardware	Replace any worn or damaged hardware as needed. Replacement hardware should be grade 5 and zinc plated unless otherwise specified.
Safety Decals	Replace if they become damaged or illegible.
Seals & Gaskets	Replace if a leak is detected and at every overhaul or teardown.

This page intentionally left blank.

REPLACEMENT PARTS

The warranty is stated in this book on page 14. Failure to return the Warranty Registration Card renders the warranty null and void.

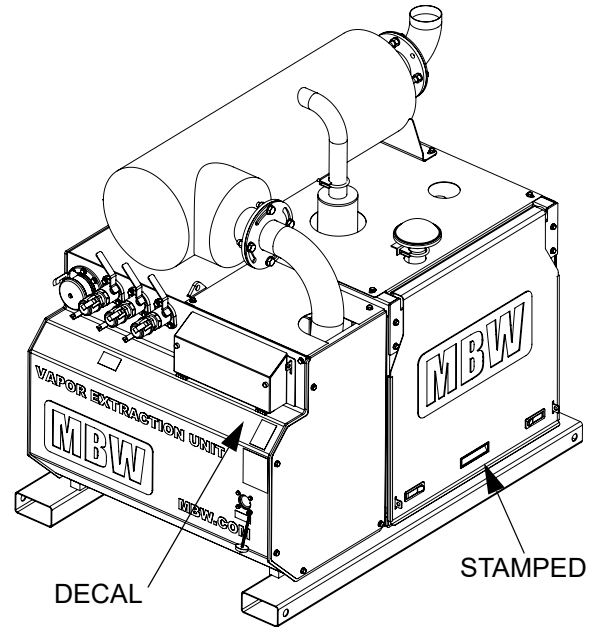


MBW has established a network of reputable distributors/dealers with trained mechanics and full facilities for maintenance and rebuilding, and to carry an adequate parts stock in all areas of the country. Their sales engineers are available for professional consultation. If you cannot locate an MBW distributor in your area, contact MBW or one of our Sales Branches listed below.

When ordering replacement parts, be sure to have the following information available:

- Model and Serial Number of machine when ordering MBW parts
- Model and Serial Number of engine when ordering engine parts
- Part Number, Description, and Quantity
- Company Name, Address, Zip Code, and Purchase Order Number
- Preferred method of shipping

REMEMBER - You own the best! If repairs are needed, use only MBW parts purchased from authorized MBW distributors.



The unit's serial number can be found in the following locations:

- Stamped into the engine mounting rail on the frame
- Decal placed below control panel

Write Model Number here

Write Serial Number here

Contact Information

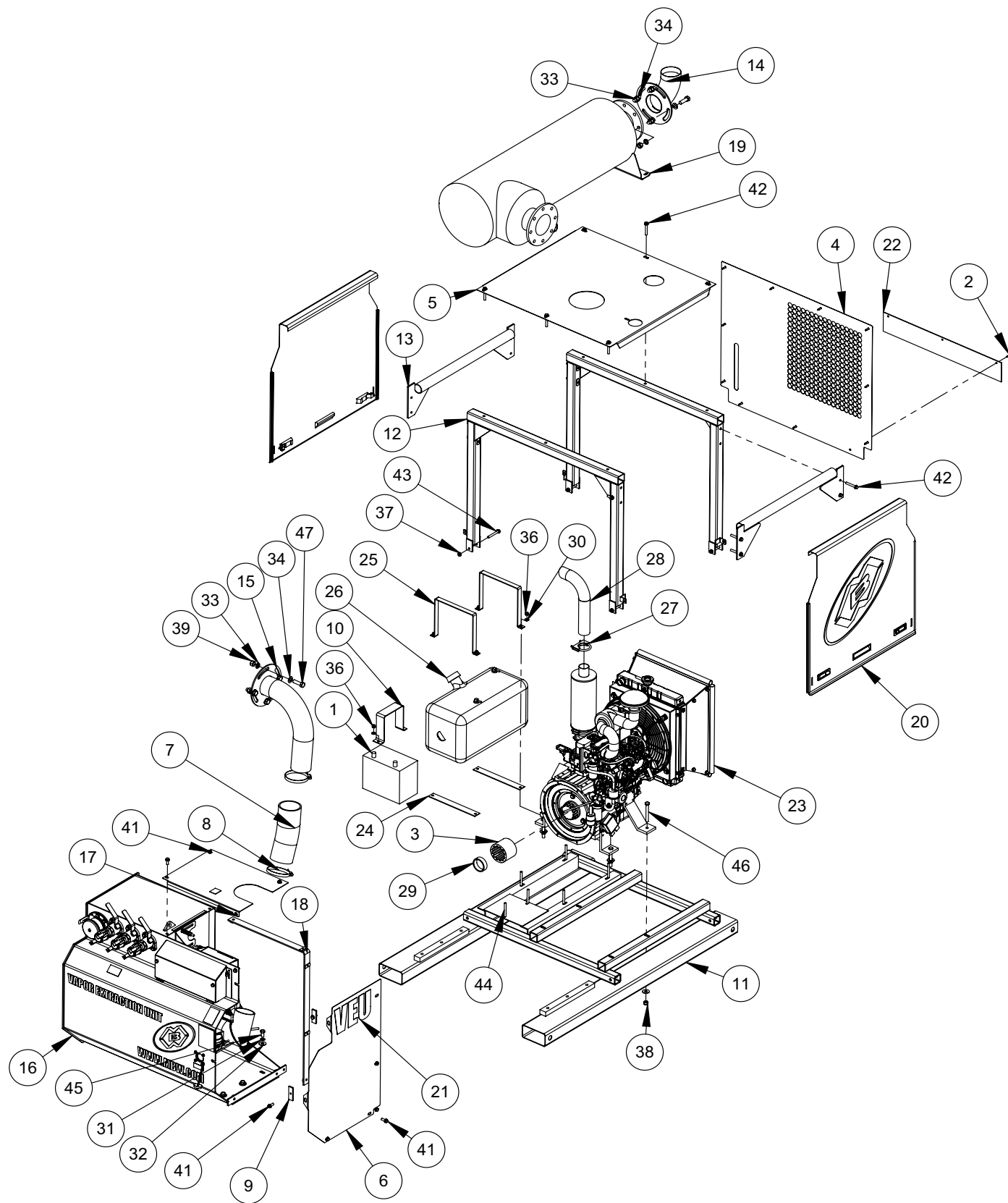
MBW, Inc.

250 Hartford Rd • PO Box 440
Slinger, WI 53086-0440
Phone: (262) 644-5234
Fax: (262) 644-5169
Email: mbw@mbw.com
Website: www.mbw.com

MBW Europe Ltd.

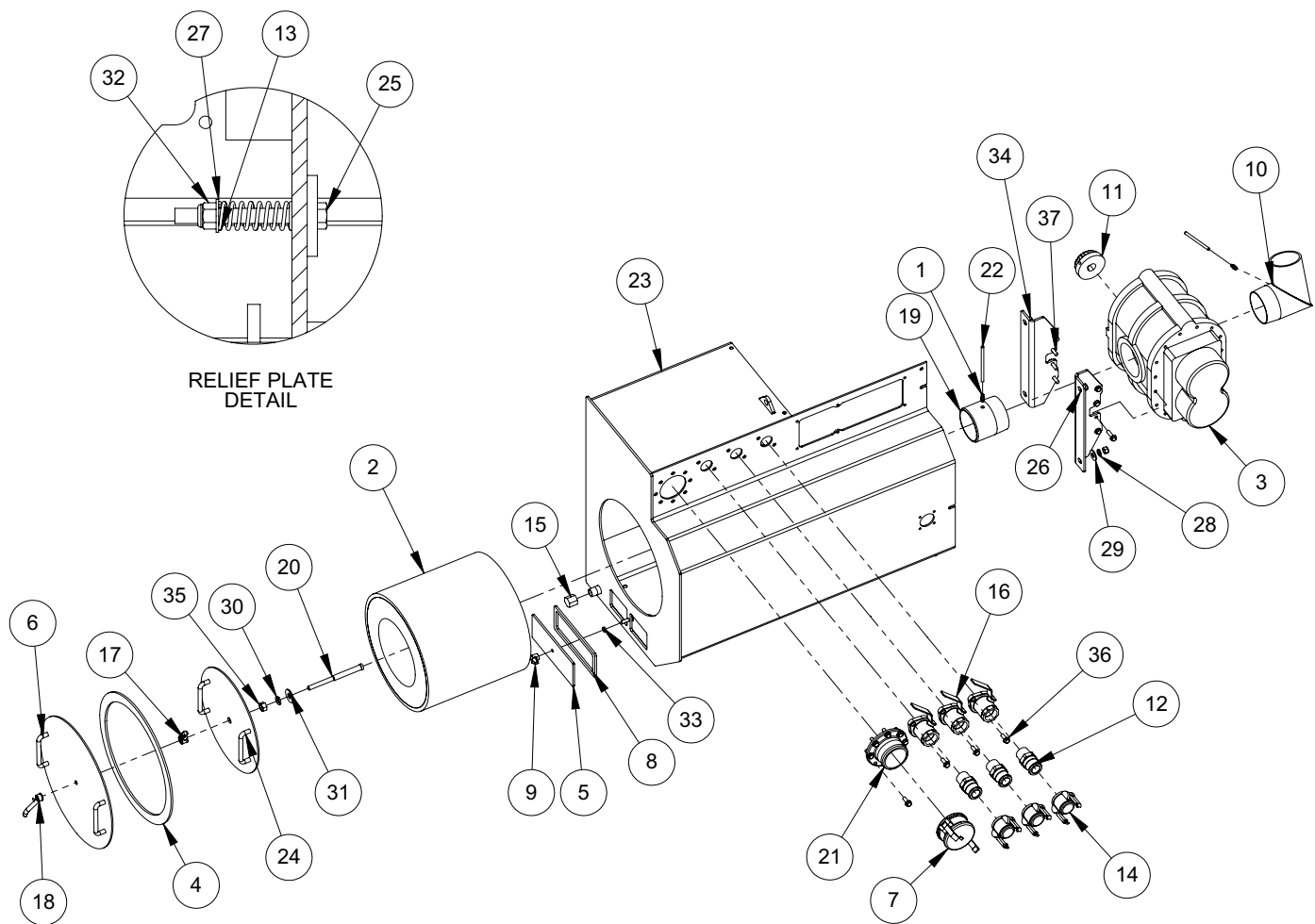
Units 2&3 Cochrane Street
Bolton BL3 6BN, England
Phone: 44 (0) 01204 387784
Fax: 44 (0) 01204 387797
E-mail: saleseurope@mbw.com
Website: www.mbweurope.com





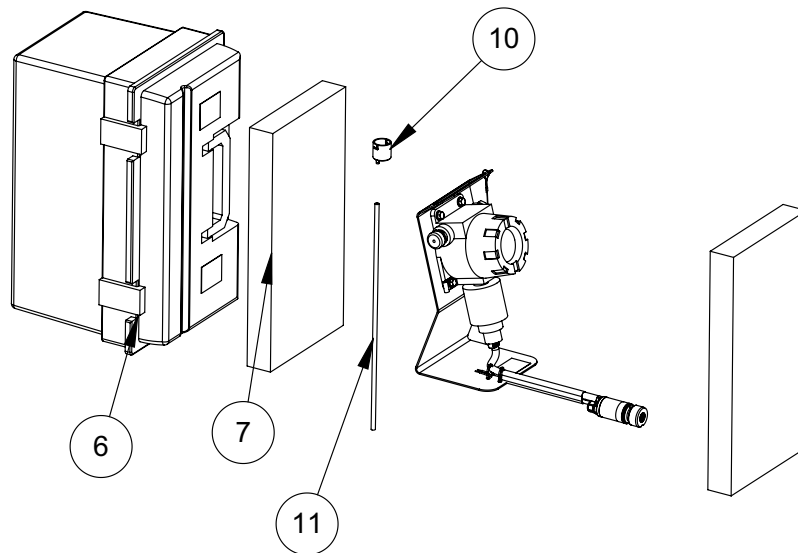
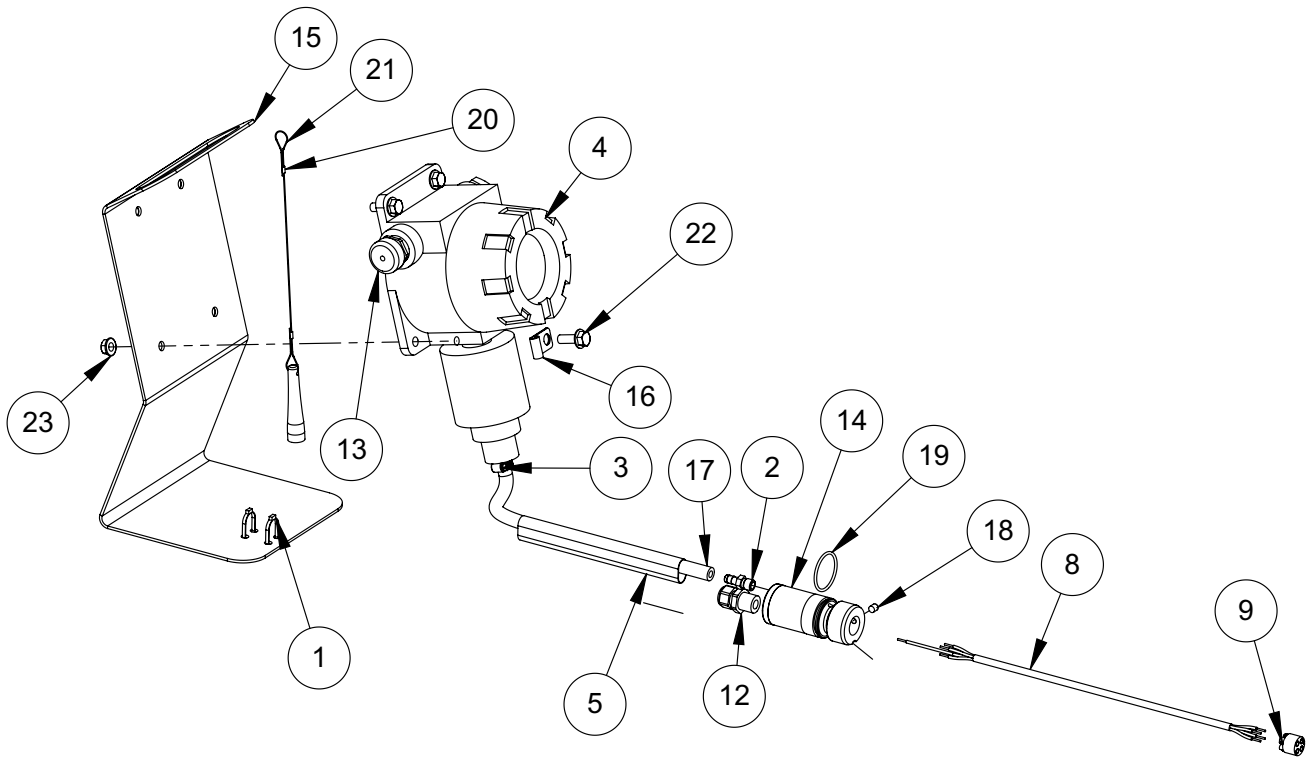
Main Assembly

ITEM	PART NO.	DESCRIPTION	QTY
1.	09247	BATTERY	1
2.	11162	SCREW, 1/4 X 1 TEKS	12
3.	18923	COUPLER, GEAR GRIP, TUBE	1
4.	20050	PANEL, RADIATOR	1
5.	20051	PANEL, ROOF	1
6.	20052	PANEL, BLOWER END	1
7.	20053	HOSE, 4.0 X 12	1
8.	20054	HOSE CLAMP, 4"	2
9.	20055	PLATE, THREADED	2
10.	20057	STRAP, BATTERY	1
11.	20061	FRAME, VEU	1
12.	20068	UPPER FRAME, VEU	2
13.	20074	CROSS MEMBER, UPPER VEU FRAME	2
14.	20077	ELBOW, EXHAUST	1
15.	20080	INLET ADAPTER, SILENCER	1
16.	20082	ASM, CANISTER AND BLOWER (See Canister and Blower Assembly, page 14)	1
17.	20091	PANEL, BLOWER ROOF	1
18.	20104	SUPPORT, ROOF AND WALL	1
19.	20106	SILENCER ASM	1
20.	20109	DOOR ASM, VEU	2
21.	20242	DECAL, VEU CANISTER, SIDE	1
22.	20443	SHROUD, FRONT, VEU	1
23.	20961	ENGINE ASM, ISUZU 3CH1	1
24.	20989	SUPPORT, FUEL TANK, 8 GALLON	2
25.	20990	STRAP, FUEL TANK	2
26.	20994	FUEL TANK, 8 GALLON	1
27.	21070	EXHAUST CLAMP, 2 3/8	1
28.	21321	EXHUAUST OUTLET, VEU	1
29.	21676	TUBE, INSERT	1
30.	F06PW	WASHER, 13/32 X 13/16 X 1/16 ZP	6
31.	F08LW	LOCKWASHER, 1/2 ZP	6
32.	F08SW	WASHER, 9/16 X 1-3/8 X 12GA ZP	10
33.	F10LW	LOCKWASHER, 5/8 ZP	8
34.	F10PW	WASHER, 5/8 X 1-1/4 X 12GA ZP	8
35.	F0518FN	NUT, FLANGE WHIZ-LOCK 5/16-18 ZP	1
36.	F0616ELN	LOCKNUT, 3/8-16 NYLOC ZP	6
37.	F0616FN	FLANGE WHIZ-LOCK NUT, 3/8-16	5
38.	F0813ELN	LOCKNUT, 1/2-13 NYLOC ZP	4
39.	F1011HN	NUT, HEX 5/8-11 ZP	8
40.	F051806FWS	FWLS, 5/16-18 X 3/4 ZP	1
41.	F061608FWS	FWLS, 3/8-16 X 1 ZP	11
42.	F061620FWS	FWLS, 3/8-16 X 2-1/2 ZP	14
43.	F061624FWS	FWLS, 3/8-16 X 3 ZP	4
44.	F061628CB	CAR BOLT, 3/8-16 X 3-1/2	6
45.	F081308HCS	HHCS, 1/2-13 X 1 GR5 ZP	6
46.	F081332HCS	HHCS, 1/2-13 X 4 GR5 ZP	4
47.	F101116HCS	HHCS, 5/8-11 X 2 GR5 ZP	8
	22268	ENGINE MOUNT SHIMS .045"	
	22269	ENGINE MOUNT SHIMS, .250"	

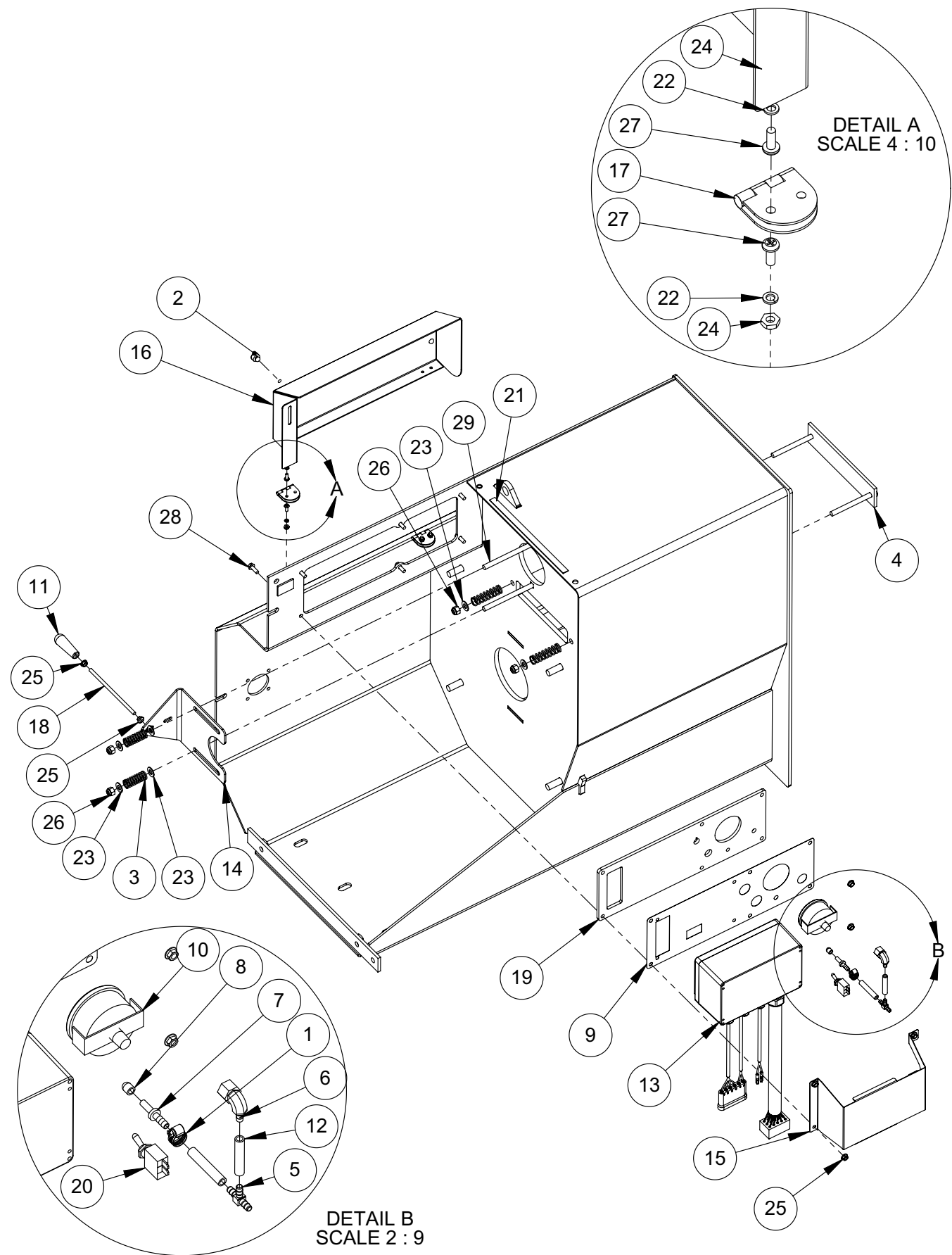


Canister and Blower Assembly

ITEM	PART NO.	DESCRIPTION	QTY
1.	05803	MALE PIPE ADAPTER	2
2.	18920	FILTER, VEU	1
3.	18927	BLOWER, TUTHILL	1
4.	18960	GASKET, DOOR	1
5.	18966	COVER, SUMP	1
6.	18972	DOOR, WELDMENT	1
7.	18984	COVER, 3" CAMLOCK	1
8.	18988	GASKET, BILGE	1
9.	18989	KNOB, THUMB	1
10.	18996	ELBOW, SILENCER	1
11.	19047	COUPLER, GEARGRIP, 1-1/8	1
12.	19185	COUPLING, 1-1/4 NPT, CAM LOCK	3
13.	19190	SPRING, COMPRESSION, RELIEF	2
14.	19256	DUST CAP, 1-1/4 FEMALE	3
15.	19455	PIPE CAP, HEX	1
16.	20083	VALVE, FLANGE MOUNT	3
17.	20084	HANDLE, 5/8-11	1
18.	20085	HANDLE, 1/2-13	1
19.	20087	ADAPTER, BLOWER	1
20.	20088	DOOR ROD, CANISTER	1
21.	20092	FITTING, 3" CAMLOCK	1
22.	20093	HOSE, 1/4 x 18	2
23.	20095	CANISTER, WELDMENT	1
24.	20102	FILTER CAP, WELDMENT	1
25.	20103	ASM, RELIEF PLATE	1
26.	20210	MOUNTING FOOT, BLOWER, PAINTED	2
27.	F06PW	WASHER, 13/32 x 13/16 x 1/16 ZP	2
28.	F08LW	LOCKWASHER, 1/2 ZP	4
29.	F08SW	WASHER, 9/16 x 1-3/8 x 12GA ZP	4
30.	F10LW	LOCKWASHER, 5/8 ZP	1
31.	F10SW	WASHER, 11/16 x 1-3/4 x 12GA ZP	1
32.	F0616ELN	LOCKNUT, 3/8-16 NYLOC ZP	2
33.	F0616HJN	NUT, HEX JAM 3/8-16 ZP	1
34.	F0813HN	NUT, HEX 1/2-13 ZP	4
35.	F1011HN	NUT, HEX 5/8-11 ZP	1
36.	F061608FWS	FWLS, 3/8-16 x 1 ZP	14
37.	F061610FWS	FWLS, 3/8-16 x 1-1/4 ZP	8
	19263	BLOWER OIL, 1 QT	
	19821	PREFILTER, FOAM	

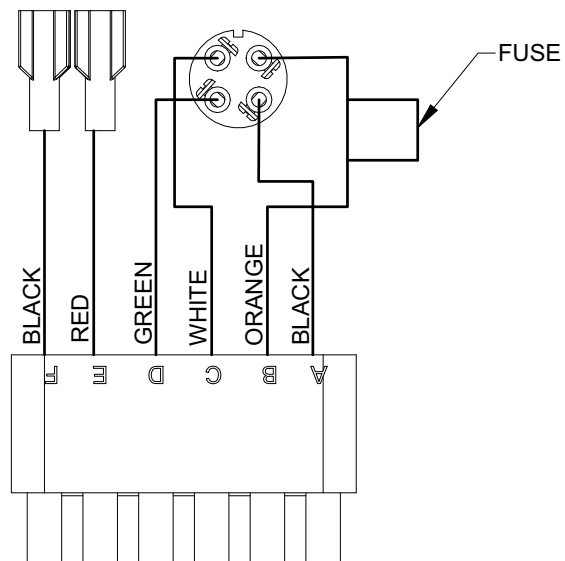
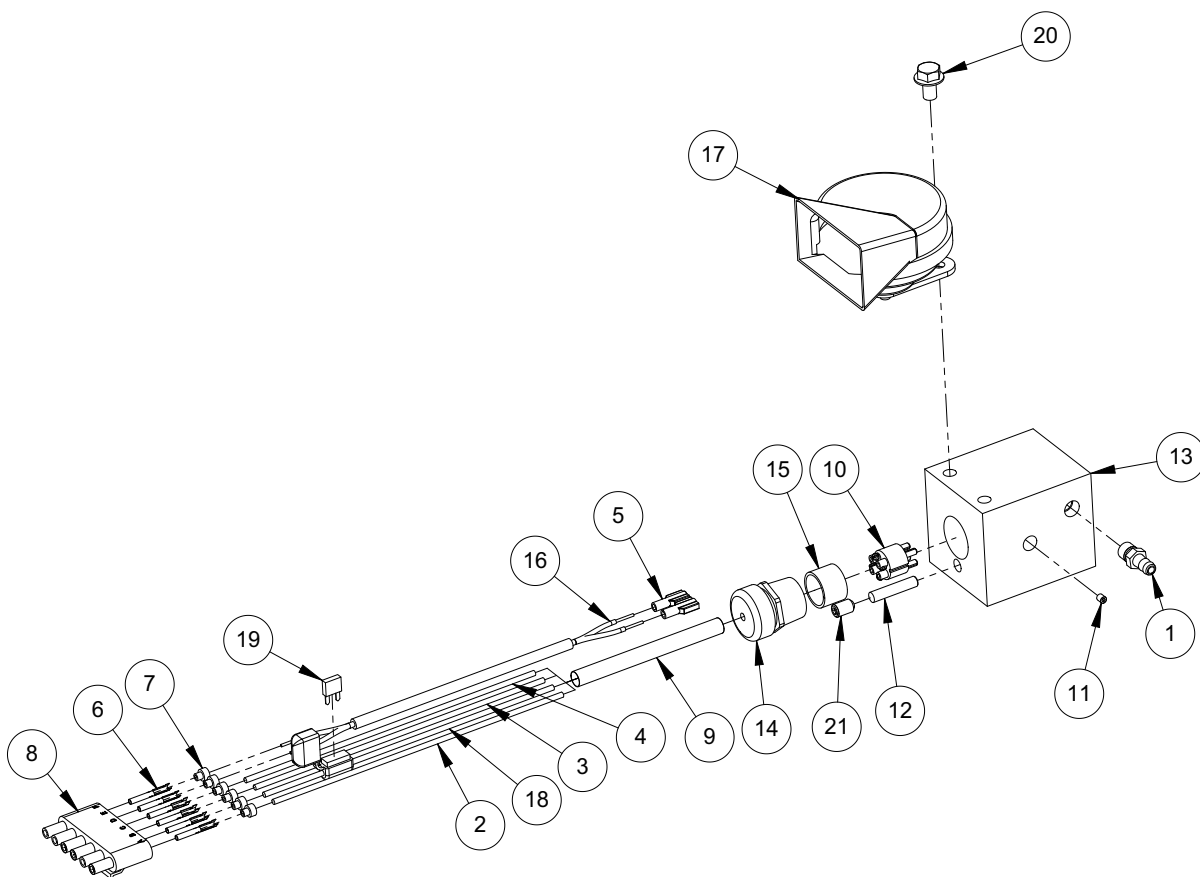


Sensor Stand Assembly



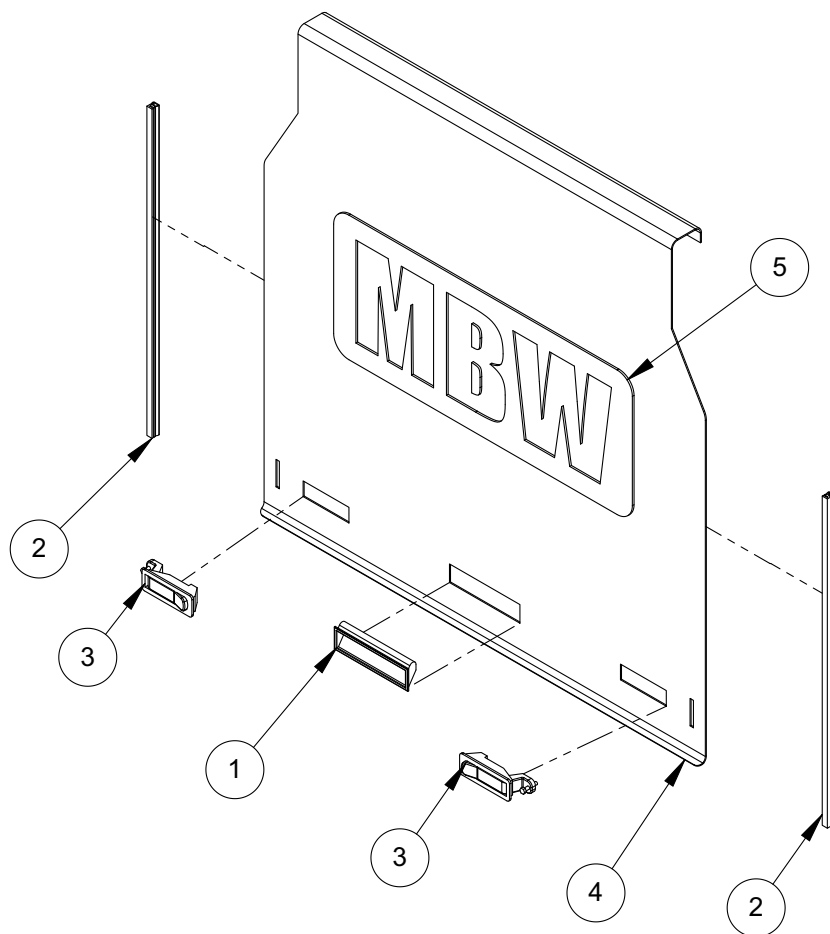
Control Assembly

ITEM	PART NO.	DESCRIPTION	QTY
1.	08442	CLAMP, WORM DRIVE, SS	1
2.	11161	BUMPER, RUBBER	2
3.	19190	SPRING, COMPRESSION, RELIEF	4
4.	20103	ASM, RELIEF PLATE	1
5.	20116	T FITTING .25 HOSE	1
6.	20117	ADAPTER, 1/4 NPT X 1/4 HOSE, 90	1
7.	20119	PRESSURE PORT	1
8.	20121	PUSH ON CAP	1
9.	20123	INSERT, CONTROL PANEL	1
10.	20155	VACUUM GAGE, PANEL MOUNT	1
11.	20207	HANDLE, BYPASS	1
12.	20245	BULK PVC HOSE, 1/4"	4"
13.	20402	ELECTRICAL ASM, VEU	1
14.	20969	BYPASS VALVE, PAINTED	1
15.	20970	SUPPORT, CONTROL BOX, PAINTED	1
16.	20973	COVER, CONTROL PANEL, PAINTED	1
17.	20974	HINGE, COVER	2
18.	20976	STUD, 1/4-20 X 6	1
19.	20983	COVER, CONTROL PANEL, TOGGLE	1
20.	20999	SWITCH, SPST, QC	1
21.	21069	FOAM TAPE, 1/2 X 1/16	10"
22.	F03LW	LOCKWASHER, #10 ZP	8
23.	F06PW	WASHER, 13/32 X 13/16 X 1/16	6
24.	F0332HN	NUT, HEX #10-32 ZP	8
25.	F0420FN	FLANGE WHIZ LOCK NUT, 1/4-20	9
26.	F0616ELN	LOCKNUT, 3/8-16 ZP	4
27.	21607	PMS #10-32 UNC X 1/2	8
28.	F042006FWS	FWLS, 1/4-20 X 3/4	6
29.	F061640CB	CAR BOLT, 3/8-16 X 5	



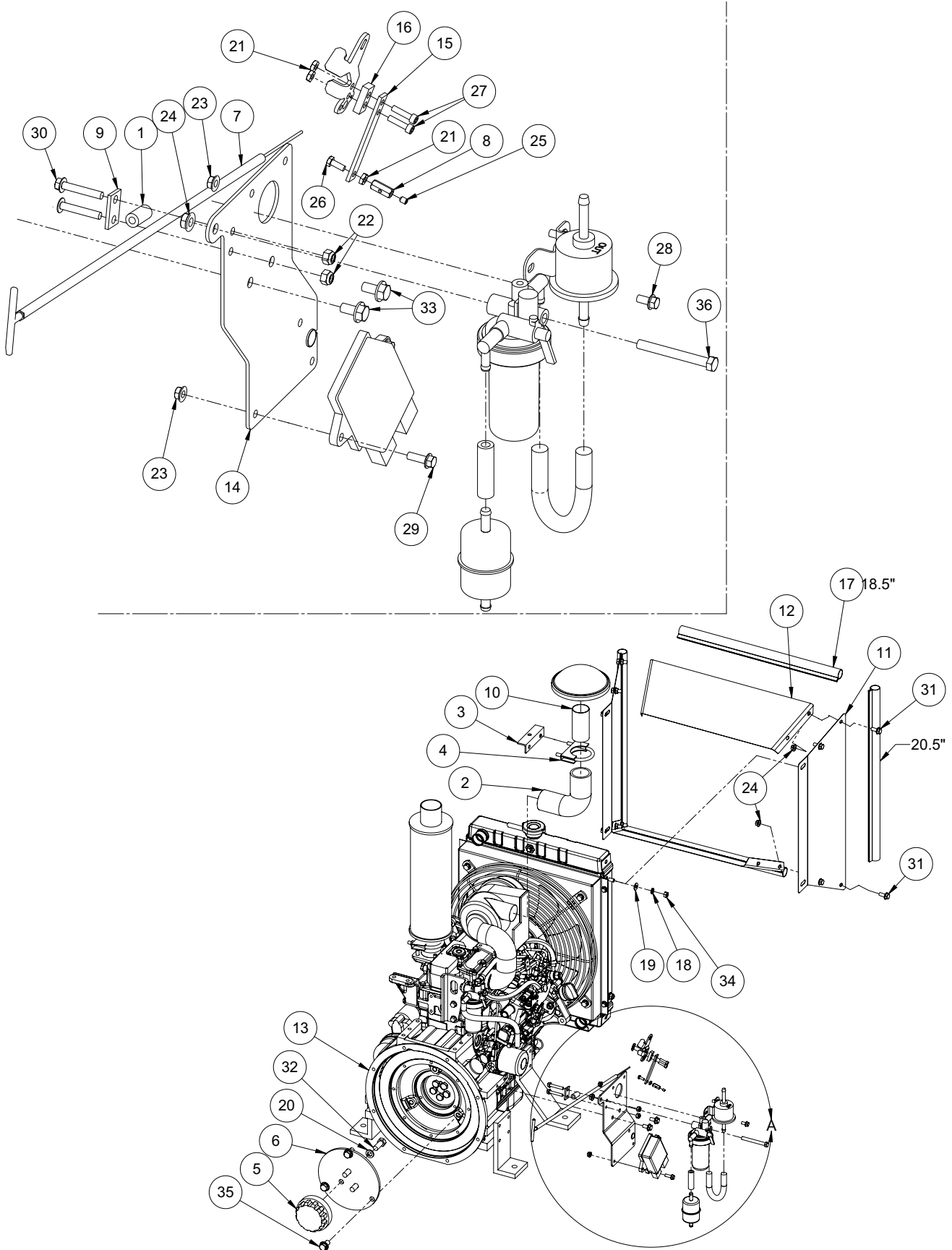
Plug Assembly

ITEM	PART NO.	DESCRIPTION	QTY
1.	05803	MALE PIPE ADAPTER	1
2.	06377	WIRE, BULK, BLACK	8"
3.	08427	WIRE, BULK, WHITE	8"
4.	08431	WIRE, BULK, GREEN	8"
5.	11444	TERMINAL, FEMALE DISCONNECT	2
6.	12302	TERMINAL, SLEEVE	6
7.	12304	SEAL, CONNECTOR WIRE	6
8.	12309	CONNECTOR TOWER (M) 6 POS	1
9.	12337	TUBE, HEAT SHRINK	2"
10.	19476	PLUG, 4 CONDUCTOR, MALE	1
11.	19477	SET SCREW, 8-32 X 1/4, POINTED	1
12.	20196	DOWEL PIN, .25 X 1.25	1
13.	20205	SOCKET, VEU PLUG	1
14.	20220	CORD GRIP, 3/4 NPT	1
15.	20589	INSULATOR, DELRIN	1
16.	20591	CORD, BULK, 18GA, 2 WIRE	1
17.	20996	HORN, 12V, LOW NOTE	1
18.	22465	FUSE HOLDER, INLINE	1
19.	22466	FUSE, MINI, 2 AMP	1
20.	F051804FWS	FWLS, 5/16-18 X 1/2 ZP	2
21.	F051804SSS	SSS, 5/16-18 X 1/2"	1
	20592	PLUG ASM (INCLUDES ITEMS 1-19)	1



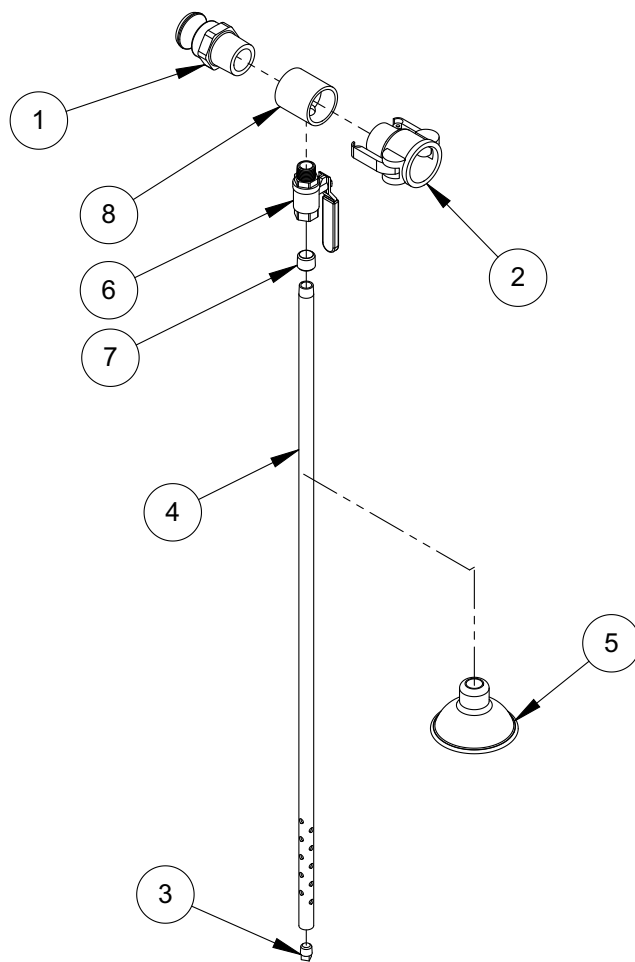
Door Assembly

ITEM	PART NO.	DESCRIPTION	QTY
1.	20110	DOOR HANDLE, SNAP IN	1
2.	20111	EDGING, DOOR	21"
3.	20112	LATCH, DOOR	2
4.	20113	PANEL, DOOR	1
5.	20239	DECAL, VEU DOOR	1
6.			
7.			
8.			
9.			
10.			
11.			
12.			
13.			
14.			
15.			
16.			
17.			
18.			
19.			
20.			
21.			
22.			
23.			
24.			
25.			
26.			
27.			
28.			
29.			
30.			
31.			
32.			
33.			
34.			
35.			
36.			
37.			
38.			
39.			
40.			
41.			
42.			
43.			
44.			
45.			
46.			
47.			
48.			
49.			
50.			

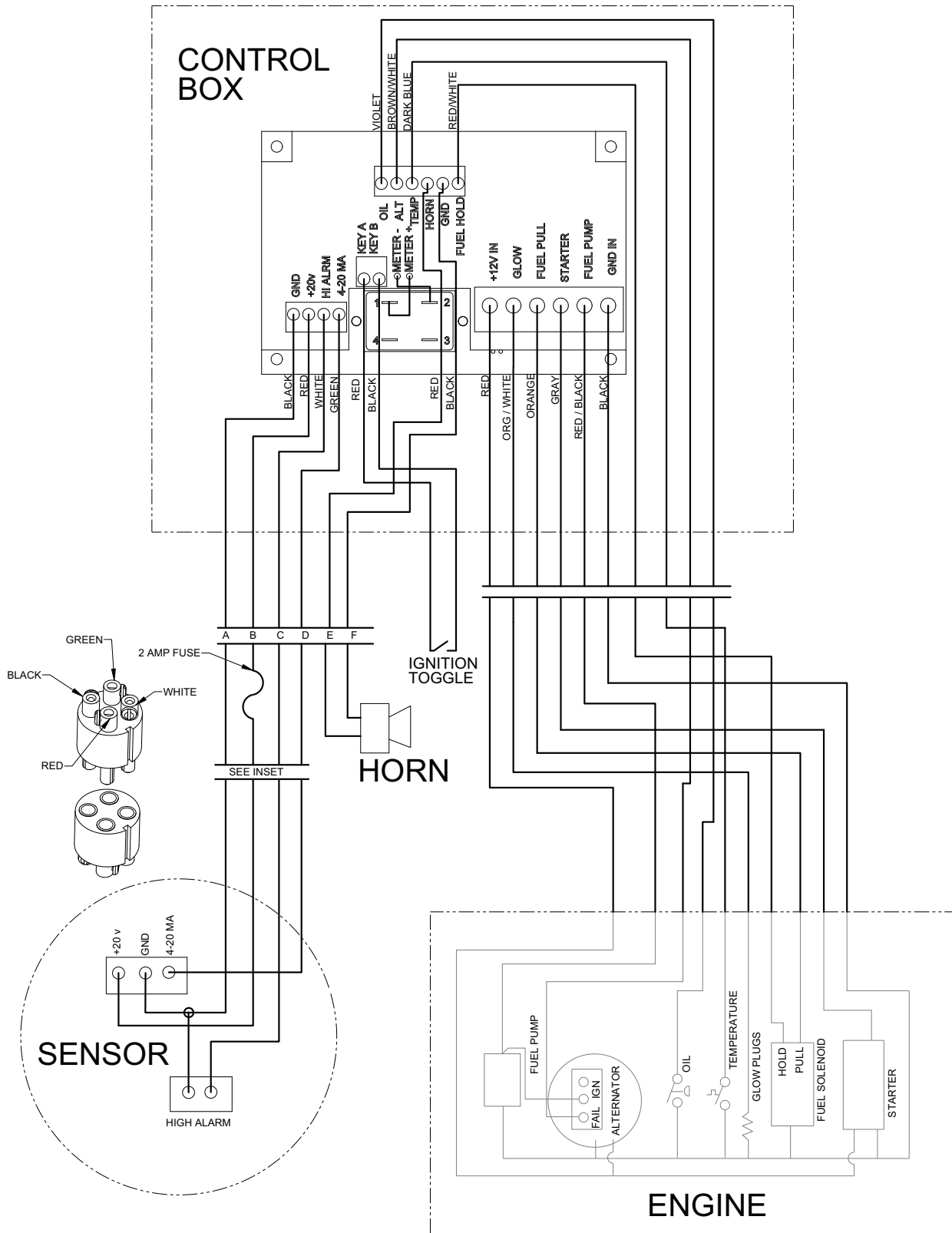


Engine Assembly

ITEM	PART NO.	DESCRIPTION	QTY
1.	06029	FUEL LINE, 1/4" BULK	1
2.	09214	PIPE, INLET	1
3.	20059	BRACKET, INTAKE	1
4.	20060	EXHAUST CLAMP, 2"	1
5.	20131	COUPLER, GEARGRIP, 1-7/16	1
6.	20133	ADAPTER PLATE, 3CB1	1
7.	20136	CABLE, THROTTLE CONTROL	1
8.	20138	THROTTLE CLAMP SWIVEL	1
9.	20140	THROTTLE CABLE CLAMP	1
10.	20147	TUBE, INTAKE	1
11.	20197	RAD SHROUD, SIDE, PAINTED	2
12.	20198	RAD SHROUD, TOP, PAINTED	2
13.	20962	ENGINE, ISUZU 3CH1	1
14.	20964	THROTTLE BRACKET, PAINTED	1
15.	20965	THROTTLE EXTENSION	1
16.	20967	THROTTLE SPACER	1
17.	20995	SEAL, EDGE GRIP	78"
18.	F05LW	LOCKWASHER, 5/16 ZP	4
19.	F05SW	WASHER, 5/16 X 3/4 X 15GA ZP	4
20.	F08LW	LOCKWASHER, 1/2 ZP	3
21.	F0324HN	NUT, HEX #10-24 ZP	1
22.	F0420ELN	LOCKNUT, 1/4-20 NYLOC	5
23.	F0420FN	FLANGE WHIZ-LOCK NUT 1/4-20	4
24.	F0518FN	NUT, FLANGE WHIZ-LOCK 5/16-18 ZP	12
25.	F032402SSS	SSS, #10-24 X 1/4	1
26.	F032404HCS	HHCS, #10-24 X 1/2 GR5 ZP	1
27.	F032406SCS	SCS, #10-24 X 3/4	2
28.	F042004FWS	FWLS, 1/4-20 X 1/2 ZP	2
29.	F042006FWS	FWLS, 1/4-20 X 3/4 ZP	2
30.	F0420012FWS	FWLS, 1/4-20 X 1-1/2 ZP	3
31.	F051806FWS	FWLS, 5/16-18 X 3/4 ZP	10
32.	F081310HCS	HHCS, 1/2-13 X 1-1/4 GR5 ZP	3
33.	M08C016FWS	FWS, M8 X 16	2
34.	M08CHN	NUT, HEX M8 X 1.25 ZP	4
35.	M12C020FWS	FWS, M12 X 20	3
36.	F051822HCS	HHCS, 5/16-18 X 2-3/4 GR5 ZP	1
	20352	ISUZU OIL FILTER	
	20351	ISUZU AIR FILTER	
	20353	ISUZU CARTRIDGE FUEL FILTER	
	21040	ISUZU INLINE FUEL FILTER	



Probe and Hose Assemblies



Wiring Schematic

[illegible]

WARRANTY

1. **IN GENERAL** - The warranties described in this document are provided by M-B-W, INC. and MBW EUROPE, LTD. ("MBW") to define what is, what is not, and for how long machines and parts are covered against material defects and/or defective workmanship. To obtain warranty service, the purchaser must, within the Warranty Period (defined in Paragraph 3): (i) report the product defect to an authorized repair center, (ii) make a written request for repair, (iii) provide proof of purchase to the authorized repair center, and (iv) deliver the equipment to the authorized repair center. A list of authorized repair centers is available on the MBW website (mbw.com) or by contacting MBW at 800-678-5237.

2. **COVERED** - MBW's obligation under this limited warranty is limited to the cost of the parts and the labor to repair any defect in material and/or workmanship at an authorized MBW repair center. Transportation charges are not covered by this limited warranty.

3. **WARRANTY PERIODS** - The Warranty Period begins on, as applicable: (i) the product purchase date by an end user or (ii) the first day the product is put into rental or two years after invoice date from MBW to Dealer, whichever starts the warranty period first. To insure that your warranty is in place, fill out the warranty card and mail it in or register your product online at www.mbw.com/service-support/warranty-registration. The warranty is nontransferable.

The Warranty Period ends after:

- A. New Ground compaction equipment - 2 years.
- B. New Concrete finishing equipment - 1 year.
- C. New Utility equipment - 1 year.
- D. Demonstration equipment - 6 months.
- E. Wear parts: lubricants, filters, belts and shock mounts - 30 days.

4. **NOT COVERED** - This warranty does not include, and MBW specifically excluded from any warranty:

- A. Used equipment - all used equipment is not warranted and is sold 'as is' 'where is' with all defects.
- B. Replacement electrical parts, including but not limited to: electric motors, circuit boards, switches, are not warranted or returnable.
- C. OEM: engines, batteries, and chargers. Those warranties are covered by the manufacturer.
- D. Consumable parts: trowel and screed blades.
- E. Equipment that has been: altered, abused, neglected, not maintained, or modified to run outside its specifications. Any modification to the machine or its parts makes this warranty null and void.
- F. Other: damage to a product from normal wear, air freight, overtime, pickup and delivery, temporary replacement rentals, freight damage, or other similar incidents.
- G. Product used in a fashion it was not designed for.
- H. Parts and labor not performed by authorized dealers.

It is at MBW's discretion if warranty applies and has the right to adjust labor rates on a claim by claim basis.

5. OTHER - IT IS EXPRESSLY AGREED THAT THIS SHALL BE THE SOLE AND EXCLUSIVE REMEDY UNDER THIS WARRANTY. UNDER NO CIRCUMSTANCES SHALL MBW BE LIABLE FOR ANY COSTS, LOSS, EXPENSE, DAMAGE, SPECIAL DAMAGES, DIRECT DAMAGES, INCIDENTAL DAMAGES, EXEMPLARY, CONSEQUENTIAL, OR PUNITIVE DAMAGES ARISING DIRECTLY OR INDIRECTLY FROM THE USE OF MBW PRODUCT OR DAMAGES FOR LOSS OF USE, LOSS OF ANTICIPATED PROFITS, INCOME, OR ECONOMIC LOSSES OF ANY KIND. MBW'S LIABILITY TO BUYER UNDER THESE WARRANTIES FOR THE PRODUCT IS LIMITED AS SET FORTH HEREIN, WHETHER BASED UPON WARRANTY, CONTRACT, NEGLIGENCE, TORT, STRICT LIABILITY OR ANY OTHER THEORY OF LIABILITY, INCLUDING BUT NOT LIMITED TO FRAUD, MISREPRESENTATION, BREACH OF CONTRACT, PERSONAL INJURY, PRODUCTS LIABILITY OR ANY OTHER THEORY.

MBW'S LIABILITY UNDER ANY WARRANTY HEREUNDER, WHETHER EXPRESS OR IMPLIED, SHALL NOT EXCEED THE COST OF REPAIR OR REPLACEMENT OF DEFECTIVE PARTS OF THE PRODUCT OR THE PRODUCT. BUYER MAY NOT BRING ANY ACTION UNDER THESE WARRANTIES MORE THAN ONE YEAR AFTER THE CAUSE OF ACTION HAS ACCRUED.

THE FORGOING WARRANTY IS EXPRESSED IN LIEU OF ALL OTHER WARRANTIES, EXPRESSED OR IMPLIED, INCLUDING THE WARRANTIES OF MERCHANTABILITY, FITNESS FOR USE, AND FITNESS FOR A PARTICULAR PURPOSE, AND ALL OTHER OBLIGATIONS OR LIABILITY ON MBW'S PART. MBW SPECIFICALLY DISCLAIMS AND EXCLUDES ANY AND ALL WARRANTIES OF MERCHANTABILITY AND FITNESS FOR A PARTICULAR PURPOSE.

MBW NEITHER ASSUMES NOR AUTHORIZES ANY OTHER PERSON TO ASSUME ON BEHALF OF MBW ANY OTHER LIABILITY OR WARRANTY IN CONNECTION WITH THE SALE OR SERVICE OF ANY MBW PRODUCT.

Some states do not allow limitations on how long an implied warranty lasts, so the above limitation may not apply to you. This warranty gives you specific legal rights, and you may also have other rights which vary from state to state.